



## **On-line PICASSO PROJECT**

**Comprehensive Catalogue Raisonné  
Prof. Dr. Enrique Mallen**

**1945**



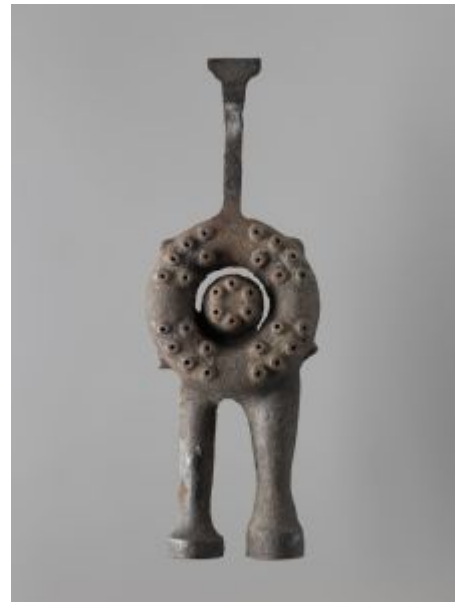
**Femme debout.** Paris. January/1945. Bronze. [20] 19,5 cm. Museum Würth, Künzelsau. (Inv 1084). Also Christie's. #527, 1105, 02/07/13; Christie's. #293, 6470, 06/26/01.

**OPP.45:011**; PP.45:096; WS:312.II; BS.55:191; FC.00\*:85; KB.01\*:134b; MM.02\*:75p; NY.49a\*:n/a; NY.56c\*:n/a; NY.60c\*:n/a; PD.09\*:n/a; RD.08\*:97p

---

**La Vénus du gaz.** Paris. January/1945. Cast iron burner & pipe from a stove. 25 x 9 x 4 cm. Musée Picasso, Paris. Dation Maya Ruiz-Picasso, 2021.

**OPP.45:143**; MPP:2021.8; PP.45:085; WS:302A; CG.12:43p; FG.64:308p; JR.12:248p; NC.10:73; TG.94\*:44; TU.15\*:89





**Tête de femme.** Paris. Early/1945. Oil on canvas. [65 x 54] 64,8 x 53,8 cm. Private collection, Nordrhein-Westfalen. Formerly Galerie Haas. 2008; Max Lang Gallery, 2006.

**OPP.45:001**; PP.45:008; Z.XIV:66

**Bûches enflammées.** Paris. 4-January/1945. Pen, ink & pencil on paper. [50 x 65] 49,5 x 59,6 cm. The Museum of Modern Art, NYC. The Joan and Lester Avnet Collection.

**OPP.45:078**; PP.45:001; Z.XIV:59;  
AB.06:251p; AB.57\*:n/a; NY.51j\*:24;  
WR.80\*:386p





**Feu de bois.** Paris. 7-January/1945. Pencil on paper. 21 x 35 cm. Private collection. Formerly Christie's. #152, 6598, 05/12/88.

**OPP.45:049**; PP.45:002; Z.XIV:60; BA.77a\*:n/a; GE.73b\*:111

---

**Tête.** Paris. 8-January/1945. Pencil on paper. 31 x 23,6 cm. Private collection, Madrid. Formerly Maya Widmaier Picasso Collection.

**OPP.45:183**; BA.86a\*:n/a; BA.86c\*:n/a; FC.00\*:86; PN.99b\*:39; SG.88\*:21; SG.88:75p





**Tête de femme (Françoise) (III)**. Paris. 9-January/1945. Etching with aquatint on Arches paper, edition 100. 33,4 x 25,8 cm. The Museum of Modern Art, NYC. (Inv 987.1964). The Louis E. Stern Collection.

**OPP.45:052**; Ba:698.3; MM.02\*:83p

---

**Tête de femme au chapeau (René Char, Le Marteau sans Maître)**. Paris. 9-January/1945. Drypoint. 16,5 x 10,7 cm. Scottish National Gallery of Modern Art, Edinburgh. (Inv A 42.0297). Bequeathed by Gabrielle Keiller 1995. Also Sotheby's. #282, N07888, 05/02/03.

**OPP.45:059**; B.I:374; Ba:699.A; GC:42; ED.07\*:47; GB.19\*:159; SG.88:75p





**Tête de femme (Françoise) (I)**. Paris. 9-January/1945.  
Etching. 13,8 x 11,8 cm. Private collection. Courtesy Galerie Art  
Focus, Zurich.

**OPP.45:081**; Ba:698.I; MM.02\*:80p

**Tête de femme (Françoise) (II)**. Paris. 9-  
January/1945. Etching & aquatint. 13,8 x 11,8 cm.  
Private collection. Courtesy Galerie Art Focus, Zurich.

**OPP.45:082**; Ba:698.II; MM.02\*:81p





**Tête de femme (Françoise) (V) (Francesco Petrarca, Cinq Sonnets).** Paris. 9-January/1945. Etching. 14 x 12 cm. Christie's. #325, 5415, 11/29/05.

**OPP.45:092**; B.I:370; Ba:698.5; GC:47; JR.12:175p

**Tête de femme au chapeau.** Paris. 9-January/1945. Etching. 16,5 x 10,7 cm. Musée Picasso, Paris. Dation 1979.

**OPP.45:271**; Ba:699.B; MPP:2969





**Tête de femme au chapeau.** Paris. 9-January/1945. Etching. 16,5 x 10,7 cm. Musée Picasso, Paris. Dation 1979.

**OPP.45:272**; Ba:699.C; MPP:2970

---

**Tête de femme au chapeau.** Paris. 9-January/1945.  
Etching. 16,5 x 10,7 cm. Musée Picasso, Paris. Dation 1979.

**OPP.45:273**; Ba:699.D; MPP:2971







**Tête de femme au chapeau.** Paris. 9-January/1945. Etching tinted.  
16,5 x 10,7 cm. Musée Picasso, Paris. Dation 1979.

**OPP.45:274**; Ba:699.E; MPP:2972

**Feu de bois.** Paris. 13-January/1945.  
[Charcoal] ink wash on paper. 50,2 x 65,4  
cm. Sotheby's. #206, N08090, 05/04/05.  
Formerly Marie-Thérèse Walter Collection.

**OPP.45:065**; PP.45:002a; GE.73b\*:44





**Feu de bois avec La Vénus de Gaz.** Paris. 17-January/1945. Ink on paper. 32 x 43,5 cm. The Picasso Estate.

**OPP.45:205**; GU.00:37; WS.93:41p

**Feu de bois.** Paris. 18-January/1945. Ink on paper. 32 x 43,5 cm. The Picasso Estate.

**OPP.45:204**; GU.00:36





**Feu de bois: étude informelle I.** Paris. 18-January/1945. India ink on paper. 13 x 16,5 cm. Private collection.

**OPP.45:209**; JA.09\*:40p

**Feu de bois: étude informelle I.** Paris. 18-January/1945. India ink on paper. 13 x 16,5 cm. Private collection.

**OPP.45:210**; JA.09\*:41p





**Feu de bois: étude informelle III.** Paris. 18-January/1945.  
India ink on paper. 16,5 x 13 cm. Private collection.

**OPP.45:211**; JA.09\*:42p



**Feu de bois: étude informelle IV.** Paris. 18-  
January/1945. India ink on paper. 16,5 x 13 cm.  
Private collection.

**OPP.45:212**; JA.09\*:43p



**Feu de bois: étude informelle V.** Paris. 18-January/1945.  
India ink on paper. 16,5 x 13 cm. Private collection.

**OPP.45:213**; JA.09\*:44p

---

**Feu de bois: étude informelle VI.** Paris. 18-  
January/1945. India ink on paper. 16,5 x 13 cm. Private  
collection.

**OPP.45:214**; JA.09\*:45p





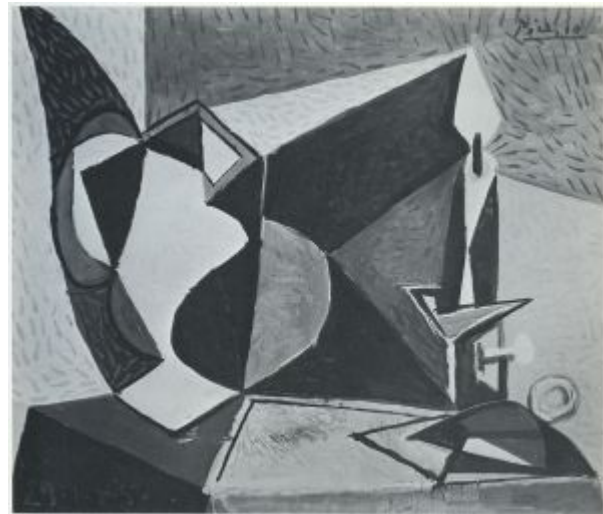
**Pichet et bougeoir.** Paris. 29-January/1945. Oil on canvas. 59,5 x 68,7 x 5,2 cm. Stedelijk van Abbe Museum, Eindhoven. (Inv 386). Acquisition, 1954.

**OPP.45:224**; PP.45:004; Z.XIV:68; LW.15\*:189p

---

**Pichet et bougeoir.** Paris. 29-January/1945~22-December/1946. Oil on canvas [OiC]. [46 x 55] 45,7 x 54,6 cm. Alsdorf Foundation Collection, Chicago. Formerly Perls Galleries, New York.

**OPP.45:223**; PP.45:003; PP.46:285; Z.XIV:67; Z.XIV:131; CH.68a\*:45; EG.66\*:15p





**Tête de femme chevelure bauchée III.** Paris. 30-January/1945. Oil on canvas. 46 x 38 cm. Private collection.

**OPP.45:119**; PP.45:006; Z.XIV:64; DP.20:288p; LE.07\*:64; MI.01\*:112

---

**Tête de femme.** Paris. 30-January/1945. Oil on canvas. 46 x 38 cm. Museo Picasso, Málaga. On temporary loan from Fundación Almine & Bernard Ruiz-Picasso para el Arte.

**OPP.45:182**; PP.45:005; Z.XIV:63; DP.20\*:123; NC.17\*:99; WR.96:415p





**Tête de femme.** Paris. 30-January/1945. Oil on canvas [OiC].  
55 x 46 cm. Private collection.

**OPP.45:276**; PP.45:007; Z.XIV:65

---

**Tête de femme.** Paris. [Early] 1-February/1945.  
Oil on canvas. [54,3 x 45] 55,2 x 45,1 cm. Private  
collection, Furtwangen. Formerly Sotheby's. #457,  
6489, 11/04/93.

**OPP.45:114**; PP.45:008a; CG.12\*:84;  
MD.02\*:237p





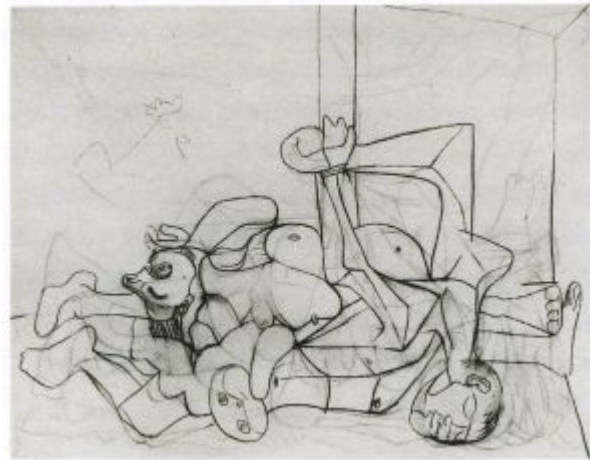


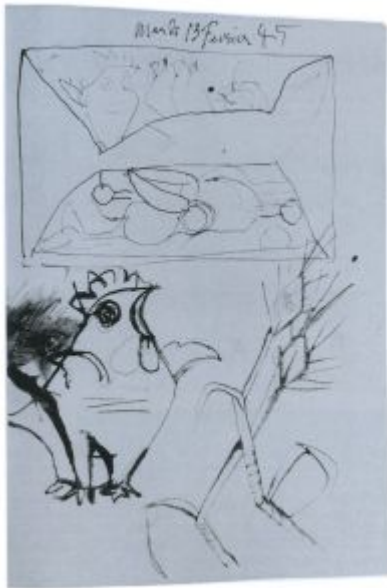
**Le charnier (Détail) (Avec Christian Zervos)**. Paris. February/1945. Charcoal on canvas [Previous stage of *Le charnier*]. S/U. Private collection.

**OPP.45:080**; PP.45:023; Z.XIV:74

**Le charnier (1ème ébauche) (Avec Christian Zervos)**. Paris. [1944~] February/1945. Charcoal on canvas [Previous stage of *Le charnier*]. 199,8 x 250,1 cm. The Museum of Modern Art, NYC. Mrs. Sam A. Lewisohn Bequest. Mrs. Marya Bernard Fund, in memory of her husband Dr. Bernard Bernard; and Anonymous Funds, 1971.

**OPP.45:185**; PP.45:022; Z.XIV:72; CG.12:76p; GU.00:48a; LU.93:340; SN.98:78p; TH.75:191; TO.04:16p; UP.00:878; WR.80\*:388p; WW.91:456p





**Le charnier (Étude)**. Paris. 13-February/1945. Ink on paper. 32 x 43,5 cm. The Picasso Estate.

**OPP.45:206**; GU.00:38; SN.98:76p

**Tête endormie**. Paris. 14-February/1945. Oil on canvas. 27 x 35 cm. Private collection, Nordrhein-Westfalen. Formerly Christie's. #339, 2479, 11/02/11.

**OPP.45:159**; PP.45:009; Z.XIV:82





**Le charnier (Étude)**. Paris. 14-february/1945. Ink on paper. 32 x 43,5 cm. The Picasso Estate.

**OPP.45:207**; GU.00:46

**Tête**. Paris. 14-February/1945. Oil on canvas [OIC]. 35 x 27 cm. Private collection.

**OPP.45:277**; PP.45:010; Z.XIV:83





**Tête vue de trois-quarts gauche.** [Paris]. 15-February/1945. Oil on canvas. 81 x 65 cm. Private collection.

**OPP.45:107**; PP.45:011; Z.XIV:81; CG.12\*:81; MG.03b\*:47; MI.01\*:130

**La casserole émaillée.** Paris. 16-February/1945. Oil on canvas. 82 x 106,5 cm. Musée National d'Art Moderne, Centre Georges Pompidou, Paris. (Inv AM.2734.P). Picasso Dation 1947.

**OPP.45:024**; PP.45:012; Z.XIV:71; AB.46:248p; AM.46\*:22; AM.67\*:99; BS.12\*:117; BS.55:80p; CB.11:184p; CG.93:258; CO.82\*:177; GB.19\*:154; GB.87:165; GP.96:257p; GU.00:53; HJ.46:35; HJ.64:140; HJ.83:115p; HJ.96:141p; JB.92\*:118; JC.59:71p; JL.06:181p; JV.06\*:29p; KS.62:42; LO.45a\*:20; LO.46\*:n/a; LU.93:344; MA.81b\*:117; MI.53\*:118; MM.67:56; PA.45b\*:19; PA.71b\*:n/a; PD.65:189p; RO.53\*:117; RP.81:21.8; SG.88\*:34; SN.98:77p; TK.75\*:28; TV.06:272p; UP.00:883; UW.84\*:20; WR.72\*:239; WR.80\*:386p; WS.93:41p; WW.91:469p





**Pichet et squelette.** Paris. 18-February/1945. Oil on canvas. 73 x 92,2 cm. Musée Picasso, Paris. Dation 1979.

**OPP.45:105**; MPP:194; PP.45:013; Z.XIV:78; AB.12\*:220p; GB.19\*:156; HS.98\*:124; MB.06\*:n/a; MP.85:168; PA.19d\*:210; PA.79a\*:308; RB.99:62p; SP.04\*:n/a; SY.11\*:n/a

**Composition et volume.** Paris. 19-February/1945. Oil on canvas. 81 x 64 cm. Private collection.

**OPP.45:108**; PP.45:014; Z.XIV:80; CG.12\*:85; MG.03b\*:48; NY.95f\*:17p





**Cruche et chandelle.** Paris. 20-February/1945. Oil on canvas.  
82 x 73 cm. Maya Widmaier Picasso Collection, Paris.

**OPP.45:002**; PP.45:015; Z.XIV:70; ME.82a\*:101;  
MG.03b\*:49; SN.98\*:78



**Nature morte à la bougie.** Paris. 21-February/1945.  
Oil on canvas. 92,2 x 73 cm. Musée Picasso, Paris.  
Dation 1979.

**OPP.45:104**; MPP:195; PP.45:016; Z.XIV:69;  
GB.19\*:155; MB.06\*:n/a; MP.85:169; PA.79a\*:309;  
SD.05\*:116; SG.88\*:35; UP.00:884



**Portrait de Inès Sassier.** Paris. 25-February/1945. Gouache, brush & India ink on paper. 64,2 x 49 cm. Christie's. #393, 6593, 06/27/02. Formerly Inès and Gérard Sassier Collection.

**OPP.45:017**; MD.02\*:235p

**Vue de Notre-Dame de Paris - Île de la Cité.** Paris. 26-February/1945. Oil on canvas. 80 x 120 cm. Museum Ludwig, Köln. (Inv ML 01228). Schenkung, Überweisung Wallraf-Richartz-Museum 23.02.1976. Formerly Mrs. Albert D. Lasker Collection, NY; Galerie Louis Carré, Paris.

**OPP.45:029**; PP.45:017; PP.45:018;  
Z.XIV:104; AB.46:249p; AM.46\*:23;  
CT.23:21p; HJ.46:43; HJ.46:43;  
JR.62\*:6.13; KG.71:57; KG.85:57;  
LU.93:240; NY.52a\*:8; PA.45b\*:n/a;  
SG.88\*:36; TO.99\*:85; WO.92\*:56





**Vue de Notre-Dame de Paris.** Paris. [26] 27-February/1945. Oil on canvas. 73 x 92 cm. Private collection.

**OPP.45:142**; PP.45:019a; BS.55:188; BS.55:259p; HJ.46:44; LU.93:255p; MI.53\*:113; MJ.55\*:109; RP.81:20.5

---

**Tête de femme.** Paris. 27-February/1945. Oil on canvas [Oic]. 41 x 27 cm. Private collection.

**OPP.45:278**; PP.45:020; Z.XIV:84







**Tête de femme.** Paris. 27-February/1945. Oil on paper [OIC]. 65 x 50 cm. Private collection.

**OPP.45:279**; PP.45:021; Z.XIV:85

---

**Vue de Notre-Dame de Paris.** Paris. 27-February/1945. Oil on canvas [OIC]. 16 x 27 cm. Private collection.

**OPP.45:282**; PP.45:019; Z.XIV:101





**Vue de Notre-Dame de Paris.** Paris. 1-March/1945. Oil on canvas [OïC]. 54 x 81 cm. Private collection.

**OPP.45:079**; PP.45:024; Z.XIV:105; BS.55:415p; HJ.46:115; LU.93:241

---

**Tête de femme.** Paris. [March]/1945. Essence on paper. 65,5 x 50,5 cm. Private collection.

**OPP.45:144**; GL.81\*:25





**Femme assise au chapeau plat.** Paris. 4-March/1945. Oil on canvas. 130 x 89 cm. Private collection.

**OPP.45:004**; PP.45:025; Z.XIV:92; AM.46\*:24; BA.03a\*:203; CG.12\*:79; GP.96:262p; JA.09\*:47p; LU.93:270; MG.03b\*:50; MI.53\*:111; MM.06\*:29; MM.85a\*:29

**Enfant à la fleur.** Paris. 5-March/1945. Oil on canvas. 130 x 88,5 cm. Galerie Louise Leiris, Paris.

**OPP.45:003**; PP.45:028; Z.XIV:90; AM.46\*:27; GL.84\*:29; JR.09:247p; WW.91:464p





**Femme dans un fauteuil.** Paris. [4] 5-March/1945. Oil on canvas. [130 x 89] 129,5 x 88,9 cm. Tony Shafrazi Gallery. 2005.

**OPP.45:066**; PP.45:026; Z.XIV:91; AM.46\*:25; HJ.46:89; MI.53\*:110

**Deux visages féminins de profil.** Paris. 5-March/1945. Pencil on paper. 12 x 8 cm. The Court Gallery, Somerset. 2011. Formerly Sotheby's. #237, L08006, 02/06/08; Artcurial. #230, 1331, 10/22/07; Inès and Gérard Sassier Collection.

**OPP.45:113**





**Femme assise.** Paris. 5-March/1945. Oil on canvas. 131,5 x 81 cm. Musée Picasso, Paris. Dation 1979.

**OPP.45:116**; MPP:196; PP.45:027; Z.XIV:77; AB.06\*:177; AM.46\*:3; BG.99:147p; GB.19\*:157; HJ.46:88; LO.45a\*:n/a; LU.93:276; MB.06\*:n/a; MI.53\*:84; MP.85:170; PA.79a\*:310; PD.09:377p; SP.04\*:n/a; UP.00:876; WR.96:414p

---

**Fillette debout.** Paris. [6] 5-March/1945. Oil on canvas. 130 x 85 cm. Private collection.

**OPP.45:120**; PP.45:029; Z.XIV:89; BS.55:190; CG.12\*:82; GL.84\*:30; HK.65:175p; LE.07\*:65; MI.53\*:112; MM.06\*:30





**Tête de mort et cruche.** Paris. 10-March/1945.  
Oil on canvas. 72,7 x 91,8 cm. The Menil Family  
Collection, Houston.

**OPP.45:006**; PP.45:030; Z.XIV:87; JB.92:291p;  
JC.01b\*:100; LS.75:70; LU.93:381p;  
NY.48c\*:n/a; SG.88:124p; SN.98\*:79;  
UW.84:89p; WS.11:234p; WS.93\*:89

---

**Crâne, poireaux et pichet.** Paris. 13-  
March/1945. Oil on canvas [OïC]. 81 x 116  
cm. Private collection.

**OPP.45:226**; PP.45:030a; Z.XIV:95;  
HJ.46:64





**Nature morte aux poireaux, tête de poisson, crâne et pichet.** Paris. 13-March/1945 ~ 3-December/1946. Oil on canvas. 81,5 x 116 [100] cm. Catherine Hutin-Blay Collection, Paris. Formerly Jacqueline Roque Picasso Collection.

**OPP.45:028**; PP.45:030b; Z.XIV:94; GL.89\*:14; JA.09\*:51p; JV.06\*:32p; LE.07\*:27; LU.93:385p; MI.53\*:117; MM.85a\*:30; TO.04\*:79; TO.14\*:66; WW.91:468p

**Nature morte au crâne, poireaux et pichet.** Paris. 14-March/1945. Oil on canvas. 73,6 x 116,6 cm. Fine Arts Museums of San Francisco. (Inv 1992.1). Museum purchase, Whitney Warren Jr. Fund, in memory of Mrs. Adolph B. Spreckels, Grover A. Magnin Bequest Fund, Roscoe & Margaret Oakes Income Fund and Bequest of Mr. & Mrs. Frederick J. Hellman by exchange.

**OPP.45:007**; PP.45:031; Z.XIV:99; AB.46:249p; AS.60:55; BS.55:189; GU.00:54; HJ.46:65; JA.09\*:52p; JB.92:292p; JB.96:79; MA.17\*:161p; NO.99:140p; PA.45d\*:n/a; PA.46b\*:n/a; PF.10\*:12; SN.98\*:80; TO.04\*:80





**Nature morte à la tête de mort, poireaux et poterie.** Paris. [16] 15-March/1945. Oil on canvas. 73 x 116 cm. Mr. and Mrs. Rafael López Cambil Collection, NY. Formerly Paloma Picasso Collection. (Inv 13057).

**OPP.45:025**; PP.45:033; Z.XIV:97; BA.18:224p; DD.61:243p; FM.84:30p; GP.96:260p; HA.16\*:n/a; JB.92\*:119; MG.03b\*:51; MI.01\*:117; MI.53\*:153; RO.53\*:48p; TO.04\*:81; UP.00:882; WR.80\*:387p

**Tête de mort, poireaux et cruche.** Paris. 16-March/1945. Oil on canvas. 73 x 116 cm. Claude Ruiz-Picasso Collection. Formerly Paloma Picasso-López Collection, Paris.

**OPP.45:026**; PP.45:032; Z.XIV:88; AB.06\*:172; BA.18\*:238p; BA.23\*:218p; CE.04\*:13; DD.61:243p; GB.19\*:158; GP.96:264p; JA.09\*:51p; JB.92\*:120; LU.93:351; MA.17\*:161p; MG.03b\*:52; MI.53\*:115; NY.95f\*:19p; PA.80a\*:14; SG.88\*:37; TO.04\*:82; WS.02:161







**Poireaux, crâne et pichet.** Paris. 18-March/1945. Oil on canvas. 89 x 130 cm. Galerie Dreyfus, Basel. 2010. Formerly Christie's. #82, 6677, 02/03/03; Mr. & Mrs. Morris H. Grossman Collection.

**OPP.45:008**; PP.45:034; Z.XIV:96; AM.46\*:26; EM.55:219p; GR.90:164p; HJ.46:63; LA.87\*:115p; LJ.80\*:21; LO.45a\*:n/a; LS.75:71; MI.53\*:114; MJ.55\*:110; MU.55\*:n/a; NY.58b\*:59; NY.73g\*:n/a; NY.79d\*:n/a; PA.45b\*:20; PA.78e\*:n/a; RO.53\*:114; RP.81:21.7; UW.84:90p; WC.62\*:16; WS.02\*:18

**Nature morte à la tête de mort, cruche et poireaux.** Paris. [18] 20-March~18-April/1945. Oil on canvas. 81 x 100 cm. Private collection.

**OPP.45:085**; PP.45:035; Z.XIV:93; BA.23\*:47p; BE.09\*:75; JV.06\*:28p; LE.07\*:26; TO.04\*:83; TO.14\*:65





**Crânes.** Paris. 19-March/1945. Black ink & charcoal on paper. 50,5 x 66 cm. Musée Cantini, Marseille. (Inv D.90.4). On loan from Musée Picasso, Paris. Jacqueline Roque Picasso Collection. Dation 1990.

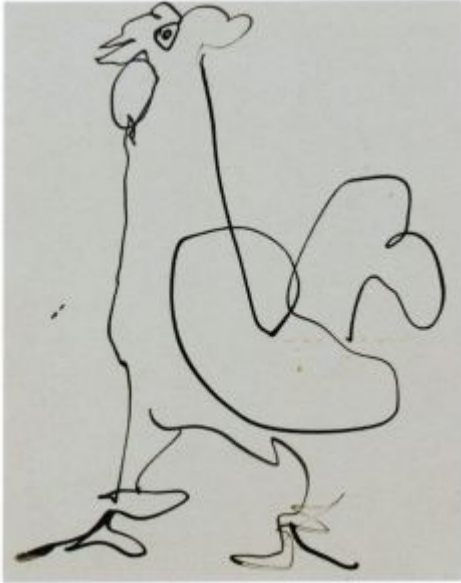
**OPP.45:217**; MPP:1990.78; PP.45:036;  
AB.06\*:175; BA.17\*:160p; GR.90\*:75;  
SN.98\*:81

---

**Coq tricolore à la croix de Lorraine.** Paris. Spring/1945. Pen, India ink & watercolor on paper. 32,5 x 26 cm. Musée Picasso, Paris. Dation 1979.

**OPP.45:071**; MPP:1336; PP.45:041; BA.07c\*:n/a;  
GU.00:44; PA.19d\*:204; PA.21g\*:198p;  
PD.06\*:279p





**Coq.** Paris. [Spring]/1945. Pen & India ink on reverse of cardboard invitation from Galerie René Drouin dated February 1945. 14 x 11,5 cm. Musée Picasso, Paris. Dation 1979.

**OPP.45:130**; MPP:1335; PP.45:037; GB.19\*:169; JC.01b\*:92

---

**Tête de coq.** Paris. [Spring]/1945. Pen & India ink on reverse of cardboard invitation from Galerie René Drouin dated February 1945. 14 x 11,5 cm. Musée Picasso, Paris. Dation 1979.

**OPP.45:131**; MPP:1334; PP.45:038; GB.19\*:168; JC.01b\*:91





**Tête de coq à la croix de Lorraine.** Paris. [Spring]/1945. India ink on reverse of cardboard invitation from Galerie René Drouin dated February 1945. 14 x 11,5 cm. Musée Picasso, Paris. Dation 1979.

**OPP.45:132**; MPP:1333; PP.45:040; GB.19\*:167;  
PD.06\*:n/a

**Tête de coq à la croix de Lorraine.** Paris. [Spring]/1945. India ink on reverse of cardboard invitation from Galerie René Drouin dated February 1945. 14 x 11,5 cm. Musée Picasso, Paris. Dation 1979.

**OPP.45:133**; MPP:1332; PP.45:039; GB.19\*:166;  
JC.01b\*:90





**Vue de Notre-Dame de Paris.** Paris.  
Spring/1945. Oil on canvas. S/U. Private collection.

**OPP.45:222**; SG.88:27p

---

**Buste de femme sur une chaise.** Paris. 22-  
March/1945. Oil on canvas [OïC]. 55 x 46 cm.  
Private collection.

**OPP.45:280**; PP.45:042; Z.XIV:86





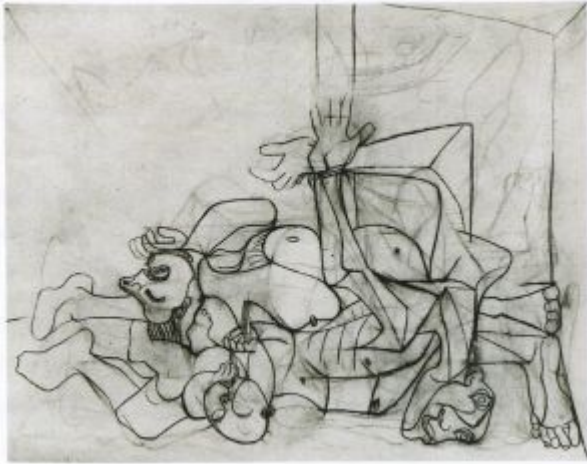
**Sabartés assis et lisant une lettre.** Paris. 23-March/1945.  
Ink on paper. 21,8 x 27,8 cm. Christie's. #4, 12610, 03/31/16.

**OPP.45:254**; BA.74\*:38; CR.74:1146

**Portrait de James Lord (Pour Lord).** Paris. 27-March/1945.  
Conté crayon on vélin paper. 50,5 x 31,5 cm. Musée Picasso,  
Paris. Don Succession Picasso, 1992.

**OPP.45:125**; MPP:1992.2; PP.45:042\*; Z.XIV:123





**Le charnier (2ème ébauche) (Avec Christian Zervos)**. Paris. [1944~] April/1945. Charcoal on canvas [Previous stage of *Le charnier*]. 199,8 x 250,1 cm. The Museum of Modern Art, NYC. Mrs. Sam A. Lewisohn Bequest. Mrs. Marya Bernard Fund, in memory of her husband Dr. Bernard Bernard; and Anonymous Funds, 1971.

**OPP.45:186**; PP.45:057; Z.XIV:73; CG.12:76p; GU.00:48b; LU.93:342; SN.98:78p; TO.04:17p; UP.00:879; WR.80\*:388p

---

**Femme dans un fauteuil**. Paris. 12-April/1945. Oil on canvas. 92 x 65 cm. Private collection, Tel Aviv. Formerly Micky Tiroche Fine Arts; Sotheby's. #2NG7, 10/30/00; Sotheby's #40, 060/2/93.

**OPP.45:010**; PP.45:047; Z.XIV:113; CC.01\*:27p; HJ.46:110; JA.09\*:46p





**Femme au chapeau III.** Paris. 12-April/1945. Black ink & wash on laid paper. 65,5 x 50,5 cm. Musée des Beaux-Arts, Grenoble. (Inv DG 1990-6-5). On loan from Musée Picasso, Paris. Jacqueline Roque Picasso Collection. Dation 1990.

**OPP.45:126**; MPP:1990.81; PP.45:045; GB.19\*:162; GL.81\*:24; GR.90\*:78



**Femme au chapeau II.** Paris. 12-April/1945. Black ink & wash on laid paper. 65,5 x 50,5 cm. Musée des Beaux-Arts, Grenoble. (Inv DG 1990-6-4). On loan from Musée Picasso, Paris. Jacqueline Roque Picasso Collection. Dation 1990.

**OPP.45:127**; MPP:1990.80; PP.45:044; GB.19\*:161; GL.81\*:23; GR.90\*:77





**Femme au chapeau I.** Paris. 12-April/1945. Black ink & wash on laid paper. 65,5 x 50,5 cm. Musée des Beaux-Arts, Grenoble. (Inv DG 1990-6-3). On loan from Musée Picasso, Paris. Jacqueline Roque Picasso Collection. Dation 1990.

**OPP.45:128**; MPP:1990.79; PP.45:043; GB.19\*:160; GL.81\*:22; GR.90\*:76

---

**Femme dans un fauteuil.** Paris. 12-April/1945. Oil on canvas. 65 x 46 cm. Private collection.

**OPP.45:151**; PP.45:046; Z.XIV:109; GR.90:166p; JS.46:24; NY.56b\*:n/a





**Vue de Notre-Dame de Paris.** Paris. 13-April/1945. Oil on canvas. 10 x 18 cm. Sotheby's. #118, L18004, 03/01/18. Formerly Sotheby's. #279, L04003, 02/04/04; Marina Picasso Collection.

**OPP.45:031**; PP.45:048; Z.XIV:102; GE.98b\*:3; NY.89a\*:30; SG.88:27p; TO.99\*:90

---

**Vue de Notre-Dame de Paris.** Paris. 13-April/1945. Oil on canvas. 14 x 22 cm. Private collection. Courtesy Martin Lawrence Galleries. Formerly Sotheby's. #19, PF1516, 12/10/15; Christie's. #280, 5991, 07/02/98.

**OPP.45:174**; PP.45:049; Z.XIV:103; CT.23\*:27; SG.88:27p





**Vue de Notre-Dame de Paris.** Paris. 13-  
April/1945. Oil on canvas [OiC]. 12 x 22 cm.  
Private collection.

**OPP.45:255**; PP.45:050; Z.XIV:106

---

**Vue de Notre-Dame de Paris.** Paris. 14-  
April/1945. Oil on canvas. 16 x 27 cm.  
Private collection.

**OPP.45:221**; PP.45:051; Z.XIV:107;  
HJ.46:114; SG.88:27p





**Nortre Dame la nuit.** Paris. 18-April/1945. Oil on canvas. 16 x 27 cm. Fundación Almine & Bernard Ruiz-Picasso para el Arte.

**OPP.45:188**; PP.45:052; Z.XIV:108;  
Ba.19c\*:212p; HJ.46:113; JR.12\*:43p;  
SG.88:27p

---

**Portrait de Stéphane Mallarmé.** Paris. 25-April/1945. Brush ink on paper. 32 x 43,5 cm. Private collection.

**OPP.45:118**; AB.07:41p; BS.55:247p



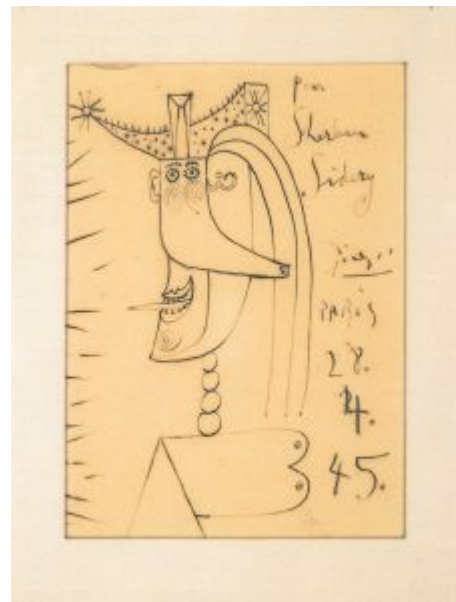


**Tête de femme (Souvenir à Paul Beaulieu).** Paris. 27-April/1945. Pencil on paper. 31,1 x 22,5 cm. Sotheby's. #332, N08024, 11/05/04.

**OPP.45:063**

**Tête de femme.** Paris. 28-April/1945. Pen & ink on paper. 18,6 x 13,6 cm. Symbolic Collection London. 2013. Formerly Sotheby's. #318, L12007, 06/20/12.

**OPP.45:173**; PP.45:053; Z.XIV:128; MN.75\*:n/a; WI.71\*:32





**Figure.** Paris. 29-April/1945. Oil on canvas. 116 x 85 cm.  
Private collection.

**OPP.45:005**; PP.45:055; Z.XIV:79; BA.03a\*:204; CG.12\*:83;  
GP.96:263p; MG.03b\*:53; MM.85a\*:31

---

**Portrait de femme.** Paris. 29-April/1945. Gouache.  
65,5 x 50,5 cm. Private collection. Formerly Sotheby's.  
#398, 06/27/90.

**OPP.45:115**; PP.45:056





**Tête de femme.** Paris. 29-April/1945. Black & brown wash [OïC]. 65,5 x 50,5 cm. Private collection. Formerly Marina Picasso Collection; (Inv 4644); Sotheby's. #141B, 11/12/88.

**OPP.45:155**; PP.45:054; GS.85\*:91



**Portrait III.** Paris. 29-April/1945. Oil on paper. 65,5 x 50,3 cm. Sotheby's. #1061, HK1355, 10/06/23. Formerly Sotheby's. #77, N09727, 05/18/17; Marina Picasso Collection.

**OPP.45:258**



**Tête (Pour Dora Maar: Grand Peintre)**. Paris. 30-April/1945. Pen & India ink on the flyleaf of the book *Le désir attrapé par la queue*. 19 x 14,2 cm. Christie's. #642, 7356, 02/08/07.

**OPP.45:109**; AB.06:23p; JL.97:238p; PA.98d\*:n/a

**Le charnier (3ème ébauche II) (Avec Christian Zervos)**. Paris. [1944~] May/1945. Charcoal on canvas [Previous stage of *Le charnier*]. 199,8 x 250,1 cm. The Museum of Modern Art, NYC. Mrs. Sam A. Lewisohn Bequest. Mrs. Marya Bernard Fund, in memory of her husband Dr. Bernard Bernard; and Anonymous Funds, 1971.

**OPP.45:184**; PP.45:058; Z.XIV:75; CG.12:76p; GU.00:49a; JL.71:259p; LU.93:343; MF.06:216; PD.09:352p; SN.98:79p; TO.04:19p; UP.00:880; WR.80\*:388p; WW.91:457p







**Le charnier (4ème ébauche) (Avec Christian Zervos)**. Paris. May/1945. Charcoal on canvas [Previous stage of *Le charnier*]. 199,8 x 250,1 cm. The Museum of Modern Art, NYC. Mrs. Sam A. Lewisohn Bequest & Mrs. Marya Bernard Fund, in memory of her husband Dr. Bernard Bernard; William Rubin & Anonymous Funds, 1971. Formerly Walter P. Chrysler, Jr. Collection, NY.

**OPP.45:187**; GU.00:49b; SN.98:79p

---

**Nu allongé et danseuses**. Paris. May/1945. Ink on paper. 32 x 43,5 cm. The Picasso Estate.

**OPP.45:203**; GU.00:26





**Le charnier (3ème ébauche I) (Avec Christian Zervos)**. Paris. [1944~] May/1945. Charcoal on canvas [Previous stage of *Le charnier*]. 199,8 x 250,1 cm. The Museum of Modern Art, NYC. Mrs. Sam A. Lewisohn Bequest. Mrs. Marya Bernard Fund, in memory of her husband Dr. Bernard Bernard; and Anonymous Funds, 1971.

**OPP.45:229**; AB.46:250p

**Le charnier**. Paris. [January] [February] [May] Summer/1945 ~ [March] ~ Late-April/1946. Oil & charcoal on canvas. 199,8 x 250,1 cm. The Museum of Modern Art, NYC. (Inv 93.1971). Mrs. Sam A. Lewisohn Bequest & Mrs. Marya Bernard Fund, in memory of her husband Dr. Bernard Bernard; William Rubin & Anonymous Funds, 1971. Formerly Walter P. Chrysler, Jr. Collection, NY.

**OPP.45:216**; PP.45:059; Z.XIV:76;  
 AB.00\*:161; AB.06\*:180; AB.97b\*:245;  
 BS.55:184; CG.12\*:77; CG.12:76p;  
 DQ.74:226-227p; DT.78:72; EC.02:566;  
 EG.66\*:9p; FC.15:31p; GB.14:258p;  
 GB.19:18p; GB.87:166; GP.96:258p;  
 GU.00:35; HD.01:54; HJ.46:16;  
 IW.93:75p; JB.92:288p; JB.96:86;  
 JL.71:114p; JM.93:105p; JW.01:47p;  
 LU.93:348; MG.80:206p; MI.53\*:123;  
 MM.00:77p; MR.59\*:46; NC.10:53;  
 NY.55i\*:123; PA.19d:24p; PA.45d\*:n/a;  
 PA.46d\*:414; PD.09:353p; PE.01a:80p;  
 PF.10\*:1; PL.56\*:101; RO.53\*:68;  
 RP.60\*:178; RP.81:21.6; RS.88:146p;  
 SG.06:9p; SG.88:87p; SN.98\*:82;  
 SP.05:106p; TH.75:192; TI.71:52;  
 TO.04:14p; TV.06\*:34; UP.00:881;  
 UW.84:114p; VB.99:54p; VK.97\*:119p;  
 WC.62\*:17; WR.12a:105; WR.72\*:167p;  
 WR.80\*:389; WR.96:411p; **WS.02:241p**;  
 WS.11:243p; WS.88:90; WS.93\*:91;  
 WS.94:88p; WW.91:457p





**Le 4 Mai 1945 (I)**. Paris. 4-May/1945. Etching on wove paper. 22 x 35 cm. Christie's. #176, 1111, 09/25/02.

**OPP.45:019**; B.I:371; Ba:700.1

**Buste de femme (Paul Valéry, Jours de Gloire: Histoire de la libération de Paris)**. Paris. 4-May/1945. Etching. 19 x 13,6 cm. Christie's. #355, 1344, 02/12/04.

**OPP.45:058**; B.I:372; GC:41; BA.19c\*:43p; JR.12:175p





**Femme étendue à la main gigantesque.** Paris. 4-May/1945. Oil on canvas. 73 x 100 cm. Catherine Hutin-Blay Collection, Paris. Formerly Jacqueline Roque Picasso Collection.

**OPP.45:166**; CG.12\*:87; LM.17\*:n/a; MM.06\*:31; MR.03\*:85p; TO.14\*:68

---

**Le 4 Mai 1945 (II).** Paris. 4-May/1945. Burin on Montval Vergé paper. 21,8 x 34,5 cm. The Museum of Modern Art, NYC.

**OPP.45:270**





**4 mai 1945 (II)**. Paris. 34-May/1945. Burin. 21,7 x 34,5 cm. Musée Picasso, Paris. Dation 1979.

**OPP.45:307**; Ba:700.2; MPP:2966

---

**Crâne, lampe, poireaux et vase**. Paris. 6-May/1945. Oil on canvas. [89 x 116] 81 x 100 cm. Marina Picasso Collection. (Inv 13069). Courtesy Galerie Jan Krugier, Geneva.

**OPP.45:027**; PP.45:060; Z.XIV:100;  
AU.89\*:44; GP.96:259p; GS.85\*:92;  
JB.92\*:121; MB.84\*:143; TK.86\*:PC-21;  
YB.99\*:166





**Crâne, lampe, poireaux et vase.** Paris. 6-May/1945~3-December/1946. Oil on canvas [OïC]. 89 x 116 cm. Private collection.

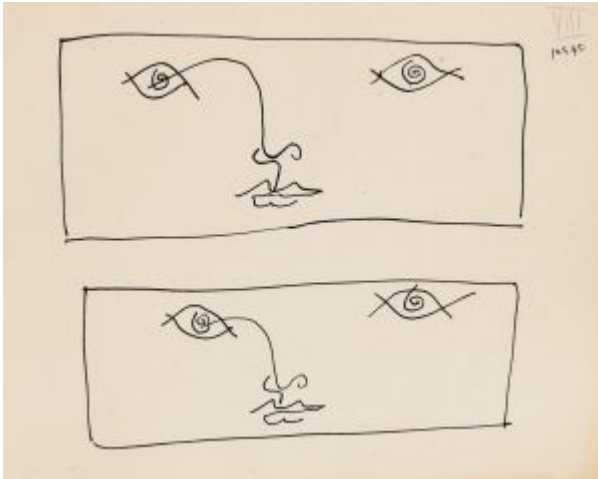
**OPP.45:156**; PP.45:061; Z.XIV:98; MI.53\*:116; MJ.55\*:111

---

**Têtes de femmes (Paul Éluard, A Pablo Picasso).** Paris. 10-May/1945. Etching, edition 25. 28,6 x 22,3 cm. Sotheby's. #287, N08237, 11/02/06.

**OPP.45:046**; B.I:373; GC:43.1



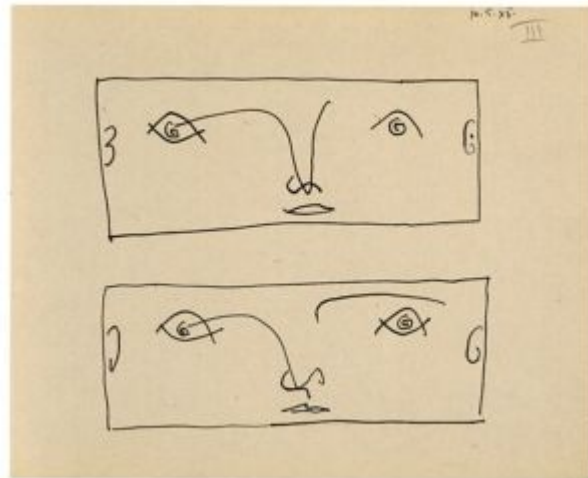


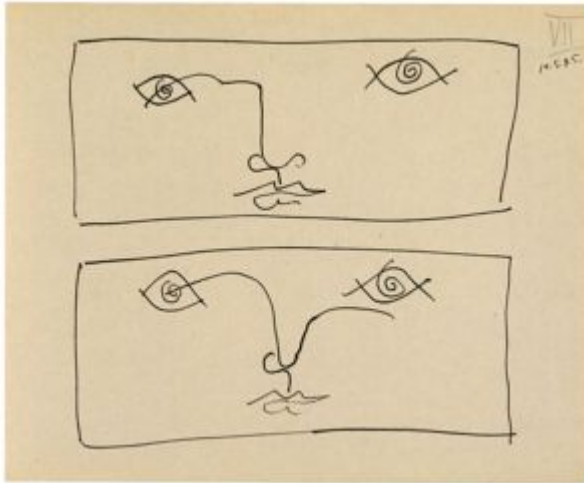
**Deux visages.** Paris. 10-May/1945. Pen & black ink on paper. [21 x 25,4] 20,7 x 26,1 cm. Sotheby's. #526, L16005, 02/05/16. Formerly Christie's. #347, 11/03/93; Marina Picasso Collection.

**OPP.45:137**; PP.45:062; JR.93\*:77

**Masques: visages III.** Paris. 10-May/1945. Drypoint. 21 x 25,5 cm. Private collection.

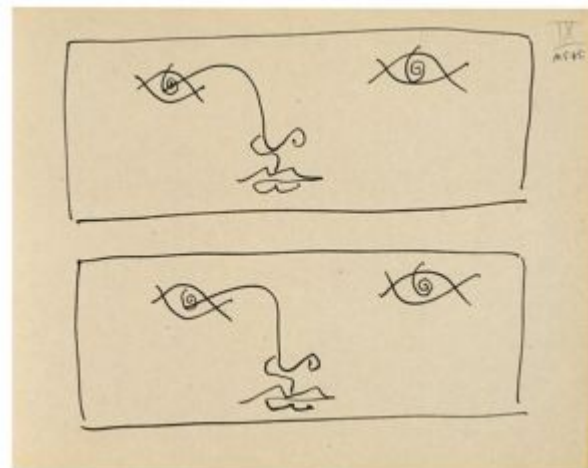
**OPP.45:239**; DO.07\*:200





**Masques: visages VII.** Paris. 10-May/1945.  
Drypoint. 21 x 25,5 cm. Private collection.

**OPP.45:240**; DO.07\*:201



**Masques: visages.** Paris. 10-May/1945.  
Drypoint. 21 x 25,5 cm. Private collection.

**OPP.45:241**; DO.07\*:202





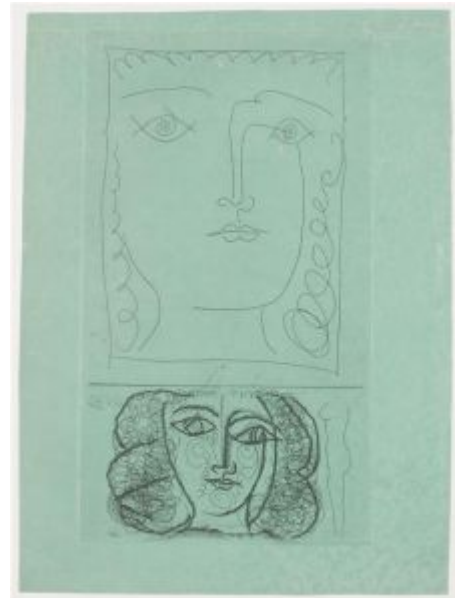
**Deux têtes de femme de face (I)**. Paris. 10-May/1945. Etching & grattoir. 29 x 16,4 cm. Musée Picasso, Paris. Dation 1979.

**OPP.45:269**; Ba: 701,1; MPP:2967

---

**Deux Têtes de femme de face (I)**. Paris. 10-May/1945. Etching. 29,3 x 16,4 cm. Musée Picasso, Paris. Dation 1979.

**OPP.45:308**; Ba: 701.1B; MPP:2968





**Portrait de Maurice Thorez.** Paris. 23-May/1945. Lead pencil on paper. S/U. Private collection.

**OPP.45:145**; PP.45:065; Z.XIV:112; GB.87:156; GU.00:112; WR.96:428p



**Portrait de Maurice Thorez.** Paris. 23-May/1945. Pencil on paper. S/U. Private collection.

**OPP.45:178**; PP.45:063; Z.XIV:110



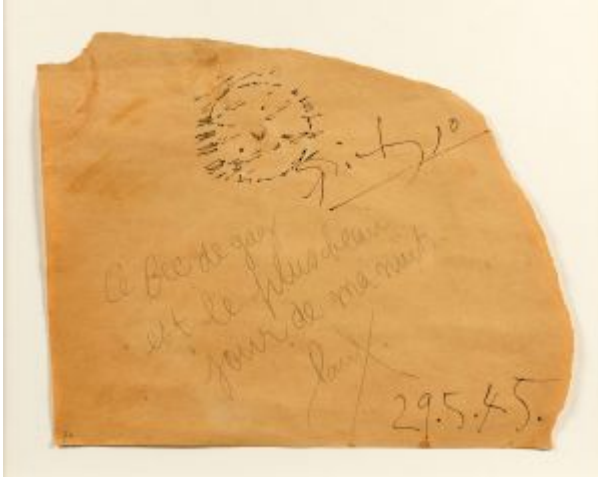
**Portrait de Maurice Thorez.** Paris. 23-May/1945. Pencil on paper. S/U. Private collection.

**OPP.45:179**; PP.45:064; Z.XIV:111

**Portrait de Maurice Thorez.** Paris. Post-23-May/1945. Reproduction in Maurice Thorez, Fils du Peuple [After *Portrait de Maurice Thorez*]. S/U. Gérard Gosselin Collection.

**OPP.45:177**; PF.10:30p



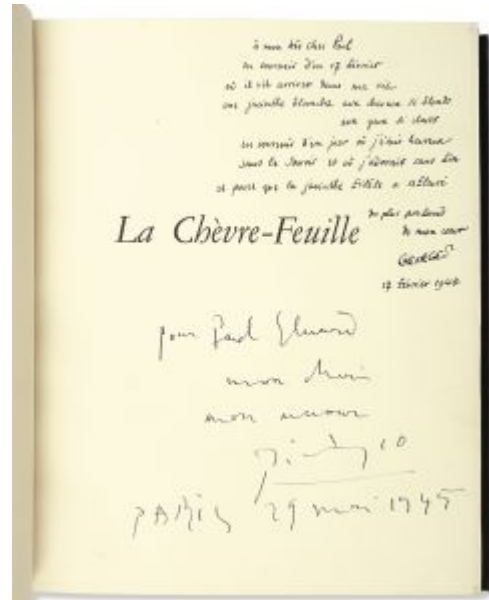


**Le bec de gaz (Pleine lune).** Paris. 29-May/1945. Ink & pencil on paper. 28,3 x 36,3 cm. Artcurial. #218, 3968, 12/04/19. Formerly Hélène Bailly Gallery, Paris; Christie's. #127, 12467, 12/01/15.

**OPP.45:245**; PA.47\*:74

**Dédicace (Pour Paul Éluard).** Paris. 29-May/1945. Ink on inside of book Georges Hugnet, La Chèvre-Feuille. 28,3 x 22,3 cm. Christie's. #67, 17590, 10/07/19.

**OPP.45:286**





**La Muse.** Paris. 31-May/1945. Pencil on two sheets of paper. 42 x 25 cm. Private collection. Formerly Sotheby's. #32, 10/11/91.

**OPP.45:364**; PP.45:065a

**Fleur.** Paris. 1-June/1945. Torn paper & burn marks with paper collage. 29,9 x 17,3 cm. Hélène Bailly Gallery. Formerly Christie's. #123, 12467, 12/01/15.

**OPP.45:247**; VC.08\*:113p





**Nature morte aux cerises III.** Paris. 4-June/1945. Oil on canvas. 16,2 x 27 cm. Sotheby's. #205, N08790, 11/03/11.

**OPP.45:158**

---

**Nature morte aux cerises.** Paris. 4-June/1945. Oil on canvas [OïC]. 14 x 22 cm. Private collection.

**OPP.45:283**; PP.45:066; Z.XIV:116





**Nature morte aux cerises V.** Paris. 4-June/1945. Oil on canvas. 16,2 x 27,3 cm. Sotheby's. #337, N11105, 11/15/22. Formerly Christie's. #60, 11/03/82.

**OPP.45:359**; PP.45:067

---

**Verre et cerises IV.** Paris. 4-June/1945. Oil on canvas. 14 x 24 cm. H el ene Bailly Gallery. 2023. Formerly Sotheby's. #118, 03/31/82.

**OPP.45:362**; PP.45:067a





**Portrait de Paul Verlaine.** Paris. 5-June/1945. Wash, pen & ink on white wove paper. 29,5 x 21 cm. The Metropolitan Museum of Art, NYC. (Inv 2007.49.81). Bequest of William S. Lieberman, 2005. Formerly The Museum of Modern Art, NYC.

**OPP.45:086**; PP.45:068; GT.10\*:88; WR.72\*:165p; WR.80\*:387

---

**Nature morte au vase de fleurs.** Paris. [6] 7-June/1945. Oil on canvas. 81,3 x 115,5 cm. Private collection.

**OPP.45:088**; PP.45:070; Z.XIV:114; HJ.46:34







**Portrait de femme.** Paris. 7-June/1945. Gouache, ink & wash on paper. 27,5 x 22 cm. Sotheby's. #5, PF1031, 03/24/10.

---

**OPP.45:135**

**Femme assise.** Paris. 14-June/1945. Oil on canvas [OiC]. 99 x 64,8 cm. Private collection.

---

**OPP.45:227**; HJ.46:107





**Singes dans les arbres.** Antibes. [Summer/1945] [1953]. Gelatin silver print. 12,7 x 7,9 cm. Phillips. #159, NY040215, 10/08/15.

**OPP.45:301**

---

**Singes dans les arbres.** Antibes. [Summer/1945]. Silver gelatin print. 13.9 x 8.8 cm. Mr. Andrew Redington Collection. Formerly Milleabros. #3258, 1-3VA16Q, 12/09-11/20.

**OPP.45:302**





**Singes dans les arbres.** Antibes. [Summer]/1945. Silver gelatin print. 13.9 x 8.8 cm. Milleabros. #3256, 1-3VA16Q, 12/09-11/20.

**OPP.45:303**

---

**Visage (Pour Georges Hugnet).** [Ménerbes]. 22-June/1945. Pen on Pierre Reverdy, Pablo Picasso et son oeuvre. 15,7 x 12,3 cm. Sotheby's. #137, PF1223, 03/28/12.

**OPP.45:171**





**Nature morte.** Paris. [1944] [July]/1945. Oil on canvas. 22 x 27 cm. Private collection.

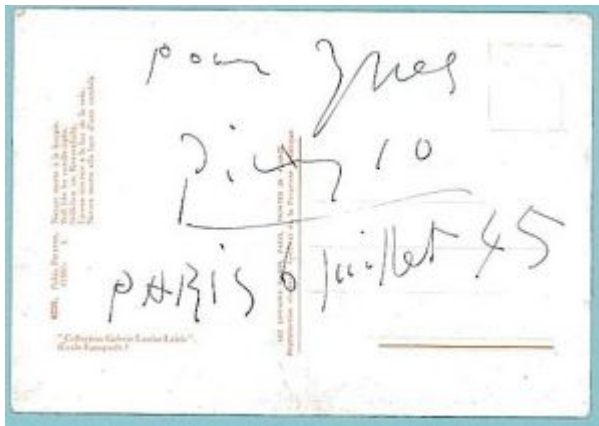
**OPP.45:150**; BS.55:181; JS.46:23

---

**La lampe et les cerises.** Paris. [July]/1945. Oil on canvas. 72,4 x 98,8 cm. The Montreal Museum of Fine Arts/Musée des Beaux-Arts de Montréal. (Inv 1968.1610). Purchased. Gift of the Friends of the Museum.

**OPP.45:215**; JA.09\*:49p





**Carte postale adressée à Inès.** Paris. 6-July/1945. Ink. S/U. Artcurial. #286, 1331, 10/22/07.

**OPP.45:111**

**Lampe, cafetière et miroir.** Paris. 9-July/1945. Oil on canvas. [81 x 116] 89 x 146 cm. Galerie Louis Carré.

**OPP.45:091**; PP.45:084; Z.XIV:115;  
HJ.46:33; NY.48e\*:13; RD.50:15





**Théière et compotier avec cerises.** Paris.  
[Winter/1946~1947] 9-July/1945. Oil on canvas.  
65,1 x 100 cm. Private collection.

**OPP.45:208**; PP.46:295; Z.XIV:352; JA.09\*:48p

---

**Nature morte au miroir.** Paris. 9-  
July/1945. Oil on canvas [OiC]. 64,8 x 99  
cm. Private collection.

**OPP.45:225**; HJ.46:37





**Tasse, verre et cafetière.** Paris. 13-July/1945. Oil on canvas. 38 x 61 cm. Musée National d'Art Moderne, Centre Georges Pompidou, Paris. (Inv AM.4490P). Don de Pierre Gaut en souvenir de Marguerite Savary, 1969.

**OPP.45:093**; GP.96:259p

---

**Nature morte.** Paris. 13-July/1945. Oil on canvas. 65 x 100 cm. Opera Gallery. 2013.

**OPP.45:219**; BB.68\*:4; BS.67a\*:27;  
CU.67\*:28; GP.96:261p





**Vue de Notre-Dame de Paris.** Paris. 14-July/1945. Oil on canvas. 10 x 18 cm. Private collection.

**OPP.45:030**; PF.10\*:4; SG.88:27p; TO.04\*:75; TO.99\*:89; UP.00:877

---

**Vue de Notre-Dame de Paris.** Paris. 14-July/1945. Oil on canvas. 38 x 45,7 cm. Private collection.

**OPP.45:228**; HJ.46:116; PA.21g\*:199p







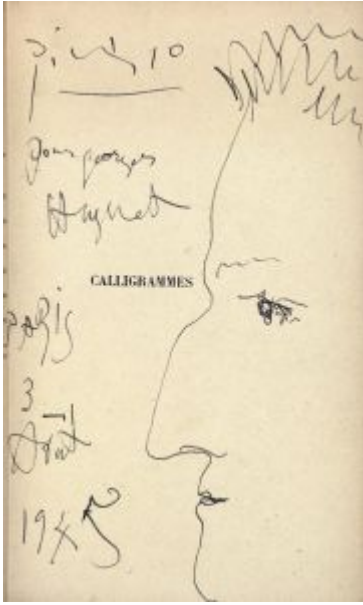
**Une chambre à Ménerbes.** Menerbes. 24-July/1945. Pen & ink on paper. 29 x 41,5 cm. Christie's. #419, 6884, 02/05/04. Formerly Dora Maar Collection.

**OPP.45:056**

**Une chambre à Menerbes.** Paris. 24-July/1845. India ink on paper. 29 x 41,5 cm. Private collection. Formerly Dora Maar Collection.

**OPP.45:294**



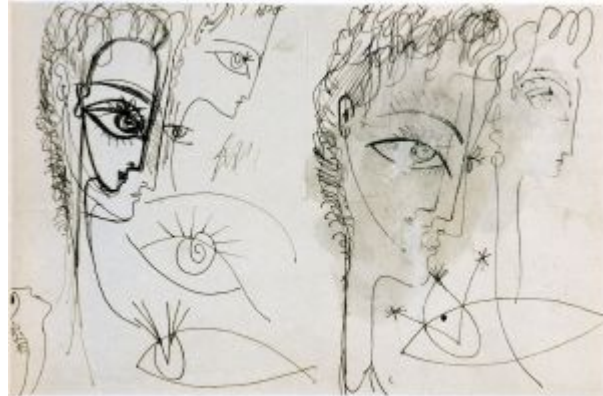


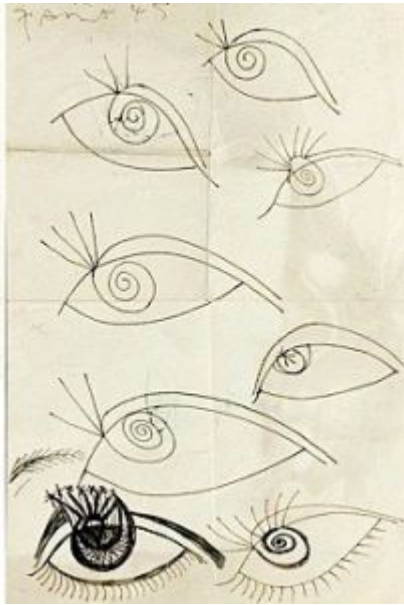
**Apollinaire de profil (Pour Georges Hugnet)**. Paris. 3-August/1945.  
Ink on inside of book Guillaume Apollinaire, *Calligrammes*. S/U.  
Sotheby's. #27, PF1453, 10/07/14.

**OPP.45:235**

**Études de profils**. Paris. 7-August/1945.  
Ink on paper [Obverse of *Étude d'yeux*].  
[18 x 28] 17,5 x 27 cm. Private collection.  
Formerly Artcurial. #231, 1331, 10/22/07;  
Inès and Gérard Sassier Collection.

**OPP.45:084**; RD.08\*:94p; RD.11\*:32





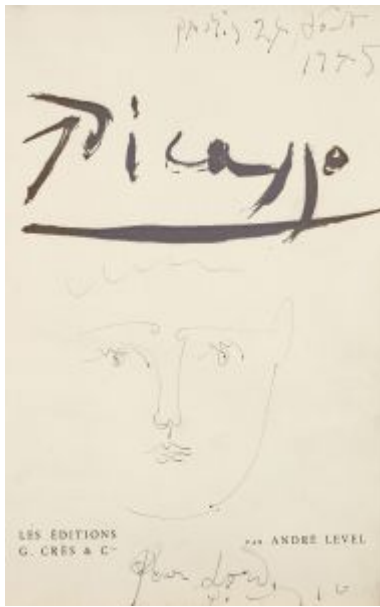
**Étude d'yeux.** Paris. 7-August/1945. Ink on paper [Reverse of *Études de profils*]. [18 x 28] 17,5 x 27 cm. Private collection. Formerly Artcurial. #231, 1331, 10/22/07; Inès and Gérard Sassier Collection.

**OPP.45:176**

**Portrait de Madeleine Riffaud (Pour Madeleine Riffaud).** Paris. 23-August/1945. Pencil on paper. S/U. Private collection.

**OPP.45:300**





**Tête de femme.** Paris. 24-August/1945. Ink drawing on the title page from André Level's Picasso, 1928. 26,4 x 18,1 cm. Phillips. #133, NY030219, 10/25/19.

**OPP.45:293**

**Faune flûtiste et danseuse à la maraca et au tambourin (II).** Antibes. 24-September/1945. Etching. 26,5 x 34,8 cm. The Museum of Modern Art, NYC. (Inv 85.1952). Gift of Abby Aldrich Rockefeller.

**OPP.45:068**; Ba: 702.2B; MM.02\*:122p





**Faune flutiste et denseuse a la maraca et au tambourin.** Antibes. 24-September/1945. Etching on wove. 26,5 x 34,8 cm. Anderson Galleries. 2006.

**OPP.45:096**; Ba:702.1A; LV.06\*:n/a; SG.88\*:73

---

**Faune musicien et danseuse.** Antibes. 24-September/1945. Black chalk & white gouache on engraving proof. 25,2 x 33,5 cm. Musée Picasso, Paris. Dation 1979.

**OPP.45:129**; MPP:1338; PP.45:071;  
BA.07c\*:n/a; BD.16\*:70; CK.04\*:97;  
JB.96:92; PA.20j\*:150





**Faune flûtiste et danseuse à la maraca et au tambourin.** Paris. 24-September/1945. Etching. 26,5 x 34,8 cm. Sotheby's. #54, N09647, 10/23-24/2017.

**OPP.45:260**; B.I:1341; Ba:702.1B

---

**Faune flûtiste et danseuse à la macara et au tambourin (I).** Antibes. 24-September/1945. Etching. 26,5 x 34,5 cm. Musée Picasso, Paris. Dation 1979.

**OPP.45:309**; Ba:702.1; MPP:2973





**Faune flûtiste et danseuse à la macara et au tambourin (II).** Antibes. 24-September/1945. Etching. 26,7 x 34,7 cm. Musée Picasso, Paris. Dation 1979.

**OPP.45:310**; Ba:702.2; MPP:2974

---

**Faune flûtiste et danseuse.** Paris. 4-October/1945. Etching. 32,8 x 24,8 cm. The Museum of Modern Art, NYC. (Inv 769.1956). The Louis E. Stern Collection.

**OPP.45:146**





**Faune et femme II.** Paris. 4-October/1945. Etching. 32,5 x 24,9 cm. The Museum of Modern Art, NYC. (Inv 770.1956). The Louis E. Stern Collection.

**OPP.45:147**

---

**Faune et femme I.** Paris. 4-October/1945. Etching. 23,5 x 15,2 cm. The Museum of Modern Art, NYC. (Inv 771.1956). The Louis E. Stern Collection.

**OPP.45:148**







**Faunesse et femme.** Paris. 5-October/1945. Etching. 26,8 x 17,3 cm. The Museum of Modern Art, NYC. (Inv 772.1956). Mrs. Bertram Smith Fund.

---

**OPP.45:287**

**Femme chèvre et nu.** Paris. 5-October/1945. Etching on laid Arches. 26,6 x 17,2 cm. Sotheby's. #392, N07931, 10/31/03.

---

**OPP.45:054;** B.II:1834





**Tête de faune (Pour Lord)**. Paris. 27-October/1945. Ink on paper. 25 x 32,5 cm. Private collection.

**OPP.45:281**; PP.45:072; Z.XIV:124

---

**La cerise**. Paris. [November]/1945.  
Lithograph in colors, edition 150. 16 x 27  
cm. Christie's. #0250, 5244, 07/24/07.

**OPP.45:112**





**Tête de femme stylisée sur fond noir (Françoise)**. Paris. 2-November/1945. Lithograph on Arches, edition 50. 31 x 23,3 cm. Fundació Palau, Caldes d'Estrac. (Inv 0000201). Also Sotheby's. #371, N07835, 11/08/02.

**OPP.45:022**; B.I:377; M:3.B; P.IV:390; JR.12:169p; MM.02:26p; NY.47c\*:3

---

**Tête de femme (Françoise)**. Paris. 2-November/1945. Lithograph on Arches. 34,2 x 26 cm. Christie's. #1, 1322, 04/28/03.

**OPP.45:041**; B.I:375; M:1.B; JR.12:169p; LB.58:94p; NY.47c\*:21





**Tête de femme sur fond noir (Françoise)**. Paris. 2-November/1945. Lithograph on Arches. 30,8 x 23,5 cm. Christie's. #2, 1322, 04/28/03.

**OPP.45:044**; B.I:376; M:2.B; P.IV:392; JR.12:169p; NY.47c\*:22



**Tête de femme (I)**. Paris. 2-November/1945. Lithograph crayon & scraper on lithographic paper, transferred to stone. 31 x 24 cm. Musée Picasso, Paris. Dation 1979.

**OPP.45:189**; M:4.01; MPP:3284; JR.12\*:192p



**Tête de femme.** Paris. 2-November/1945. Lithograph. 34 x 26 cm. Musée Picasso, Paris. Dation 1979.

**OPP.45:311**; M:1; MPP:3281

**Tête de femme fond noir.** Paris. 2-November/1945. Lithograph. 30,5 x 23 cm. Musée Picasso, Paris. Dation 1979.

**OPP.45:312**; M:2; MPP:3282





**Tête de femme stylisée. Fond noir.** Paris. 2-November/1945.  
Lithograph. 31,2 x 22,2 cm. Musée Picasso, Paris. Dation 1979.

**OPP.45:313**; M:3; MPP:3283

---

**Tête de jeune fille (I).** Paris. 5-November/1945.  
Lithograph on Arches, edition 50. 24 x 16,5 cm. Galerie  
Michael, Beverly Hills, CA. 2006.

**OPP.45:103**; M:5.01.B; JR.12\*:194p





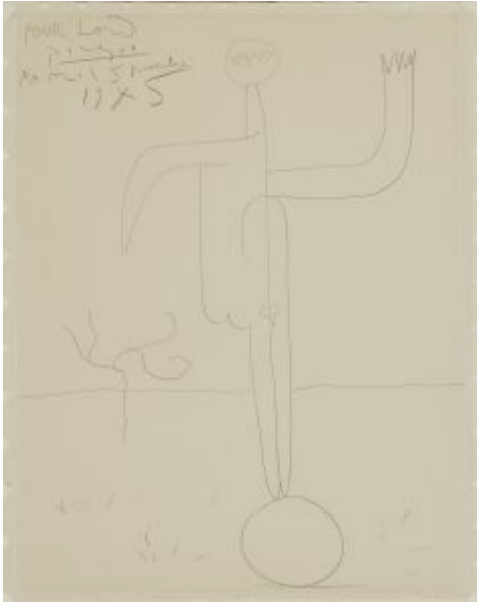
**Tête de jeune fille (II)**. Paris. 5-November/1945. Lithograph, edition 6. 30,5 x 22,9 cm. Phillips. #32, NY030214, 10/28/14.

**OPP.45:122**; M:7.02.B

**Tête de jeune fille (I)**. Paris. 5-November/1945. Lithograph. 32,5 x 24,7 cm. Phillips. #32, NY030214, 10/28/14.

**OPP.45:190**; M:7.01.B; JR.12:171p





**L'équilibriste (Pour Lord)**. Paris. 5-November/1945. Pen & India ink & pencil on paper. 65 x 51 cm. Omer Tiroche Gallery, London. Formerly Christie's. #151, 1132, 06/19/13.

**OPP.45:218**; PP.45:073; Z.XIV:127

---

**Tête de jeune fille (I)**. Paris. 5-November/1945. Lithograph. 24 x 16,5 cm. Musée Picasso, Paris. Dation 1979.

**OPP.45:315**; M:5.01; MPP:3286







**Tête de jeune fille.** Paris. 5-November/1945. Lithograph. 30 x 22 cm. Musée Picasso, Paris. Dation 1979.

**OPP.45:318**; M:7.01; MPP:3292

---

**Tête de jeune fille (IV).** Paris. 5-November~17-December/1945. Lithograph on Arches. 26,7 x 20,9 cm. Christie's. #5, 1322, 04/28/03.

**OPP.45:047**; B.I:383; M:5.04.B; GM.81\*:134; JR.12\*:195p; NY.47c\*:4





**Jeune fille aux grands cheveux (I)**. Paris. 6-November/1945. Lithograph on stone with soft crayon. 39 [38] x 32,5 cm. Sotheby's. #45, L09703, 09/24/09. Also Kunstmuseum Picasso, Münster. (Inv 49.12).

**OPP.45:083**; M:12.01.B; MM.02\*:84p; PD.16\*:n/a



**Jeune fille aux grands cheveux (I)**. Paris. 6-November/1945. Lithograph. 38,3 x 32,3 cm. Musée Picasso, Paris. Dation 1979.

**OPP.45:358**; M:12.01; MPP:3364



**Tête de jeune garçon (III)**. Paris. 7-November/1945. Lithograph on wove paper, edition 50. 29,5 x 22,9 cm. Tate Modern, London. (Inv P11364). Bequeathed by Elly Kahnweiler 1991 to form part of the gift of Gustav and Elly Kahnweiler, accessioned 1994. Also Museu Picasso, Barcelona.

**OPP.45:014**; B.I:378; M:8.03; MPB:70.008; GB.19\*:171; JR.12:171p; LE.21\*:216; MG.15\*:128; NY.47c\*:1; RI.13\*:232p; YP.13\*:54

---

**Jeune fille aux cheveux longs (II)**. Paris. 7-November/1945. Lithograph on stone with soft crayon Arches. 38,1 x 31,7 cm. Christie's. #11, 1322, 04/28/03.

**OPP.45:051**; M:12.02.B; JR.12:200p





**Tête de jeune fille (I)**. Paris. 7-November/1945. Lithograph.  
32 x 26 cm. Private collection.

**OPP.45:259**; M:9.01; PD.16\*:n/a

---

**Tête de jeune garçon (I)**. Paris. 7-November/1945.  
Lithograph. 29 x 23 cm. Sotheby's. #9, N10015,  
11/21/19.

**OPP.45:285**; M:8.01.B





**Tête de jeune garçon (I).** Paris. 7-November/1945.  
Lithograph. 29 x 23 cm. Musée Picasso, Paris. Dation 1979.

**OPP.45:321**; M:8.01; MPP:3295

---

**Tête de jeune garçon (II).** Paris. 7-November/1945.  
Lithograph. 32 x 26 cm. Musée Picasso, Paris. Dation 1979.

**OPP.45:322**; M:8.02; MPP:3296





**Jeune fille aux grands cheveux (II)**. Paris. 7-November/1945. Lithograph. 38 x 31,8 cm. Musée Picasso, Paris. Dation 1979.

**OPP.45:329**; M:12.02; MPP:3307

---

**Tête de jeune fille (II)**. Paris. 9-November/1945. Lithograph. 32 x 26 cm. Kunstmuseum Picasso, Münster. Also Christie's. #90, 7747, 09/17/09.

**OPP.45:123**; M:9.02.B; JR.12\*:202p; MD.02\*:245p





**Jeune fille aux grans cheveux (III)**. Paris. 9-November/1945. Lithograph crayon & scraper on stone. 38 x 32 cm. Sotheby's. #93, N09217, 11/03/14.

**OPP.45:202**; M:12.03.B; GB.19\*:170; JR.12\*:200p;  
PD.16\*:n/a

---

**Tête de jeune fille (II)**. Paris. 9-November/1945. Lithograph. 32 x 26 cm. Musée Picasso, Paris. Dation 1979.

**OPP.45:323**; M:9.02; MPP:3297





**Jeune fille aux grands cheveux (III)**. Paris. 9-November/1945. Lithograph. 31,1 x 32,3 cm. Musée Picasso, Paris. Dation 1979.

**OPP.45:330**; M:12.03; MPP:3308

---

**Les deux femmes nues (I)**. Paris. 10-November/1945. Lithograph. 32,4 x 44,5 cm. Sotheby's. #115, N09216, 10/31/14.

**OPP.45:195**; M:16.01.B; JR.12:196p







**Les deux femmes nues (I)**. Paris. 10-November/1945. Lithograph. 25,7 x 33,2 cm. Musée Picasso, Paris. Dation 1979.

**OPP.45:335**; M:16.01; MPP:3313

---

**Arabesque**. Paris. 12-November/1945. Lithograph in red on Arches. 38,7 x 31,4 cm. Christie's. #13, 1322, 04/28/03. Also Kunstmuseum Picasso, Münster.

**OPP.45:042**; M:15.B; LE.21\*:284; SF.09:164p





**Tête de jeune fille (III)**. Paris. 12-November/1945. Lithograph wash & scraper on stone. 32 x 26 cm. Private collection.

**OPP.45:199**; M:9.03.B; JR.12\*:203p

**Nature morte au compotier (II)**. Paris. 12-November/1945. Lithograph. 34,5 x 24,5 cm. Musée Picasso, Paris. Dation 1979.

**OPP.45:256**; M:6.02; MPP:3290;  
CE.04\*:47





**Tête de jeune fille (III)**. Paris. 12-November/1945.  
Lithograph. 32 x 26 cm. Musée Picasso, Paris. Dation 1979.

**OPP.45:324**; M:9.03; MPP:3298

---

**Arabesque**. Paris. 12-November/1945. Lithograph. 44,3  
x 32,7 cm. Musée Picasso, Paris. Dation 1979.

**OPP.45:334**; M:15; MPP:3312





**Les deux femmes nues (II)**. Paris. 13-  
November/1945. Lithograph. [28,1 x 51] 25 x 33  
cm. Sotheby's. #29, L10161, 09/16/10.

**OPP.45:138**; M:16.02.B; GS.85\*:93.II; LS.75:61

---

**Les deux femmes nues (II)**. Paris. 13-  
November/1945. Lithograph. 25,7 x 33,3  
cm. Musée Picasso, Paris. Dation 1979.

**OPP.45:336**; M:16.02; MPP:3314





**Tête de jeune fille (IV)**. Paris. 15-November/1945. Lithograph wash & scraper on stone. 32 x 26 cm. Bonhams. #68, 29353, 03/26/24.

**OPP.45:197**; M:9.04.B; JR.12\*:203p

**Tête de jeune fille**. Paris. 15-November/1945. Lithograph. 32 x 26 cm. Musée Picasso, Paris. Dation 1979.

**OPP.45:325**; M:9.04; MPP:3299





**Nature morte au compotier (III)**. Paris. 16-November/1945. Lithograph on Arches, edition 50. 25 x 36,1 cm. Christie's. #136, 1368, 04/28/04.

**OPP.45:060**; B.I:379; M:6.03.B; FM.07\*:n/a; LV.06\*:n/a

---

**Jeune fille aux grans cheveux (IV)**. Paris. 16-November/1945. Lithograph crayon & scraper on stone. 38 x 32 cm. Sotheby's. #93, N09217, 11/03/14.

**OPP.45:192**; M:12.04.B; JR.12\*:200p





**Nature morte au compotier (III)**. Paris. 16-November/1945. Lithograph. 24,8 x 36,1 cm. Musée Picasso, Paris. Dation 1979.

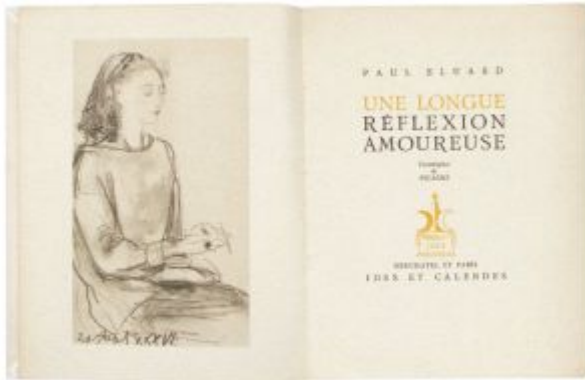
**OPP.45:317**; M:6.03; MPP:3291

---

**Jeune fille aux grands cheveux (IV)**. Paris. 16-November/1945. Lithograph. 39 x 31,5 cm. Musée Picasso, Paris. Dation 1979.

**OPP.45:331**; M:12.04; MPP:3309





**Portrait de Nusch Éluard (Paul Éluard, Une Longue réflexion amoureuse).** Paris. 17-November/1945. Printed page [After *Portrait de Nusch Éluard*]. 26 x 20 cm. Museu Picasso, Barcelona.

**OPP.45:298**; BA.19c\*:134p

---

**Nature morte à la pomme.** Paris. 18-November/1945. Paper cut-outs & charcoal on card. 18,5 x 11,6 cm. Sotheby's. #61, L03007, 10/21/03. Formerly Marie-Thérèse Walter Collection.

**OPP.45:053**; PP.45:073b; BU.75b\*:34; GE.73b\*:52; PA.76e\*:25







**Nature morte (Verre et trois pommes).** Paris. 18-November/1945. Pasted paper, gouache & charcoal on paper. 33 x 43 cm. Museum Ludwig, Köln. (Inv ML/Z 2001/058). Schenkung 2001. Formerly Galerie Beyeler, Basel.

**OPP.45:154**; PP.45:073a; WO.92\*:55

**Nature morte aux fruits.** Paris. 18-November/1945. Pasted paper & charcoal on paper. [21,5 x 32,5] 21,1 x 32,7 cm. Sotheby's. #524, L16005, 02/05/16. Formerly Marina Picasso Collection.

**OPP.45:181**; BE.09\*:84; KB.99\*:40



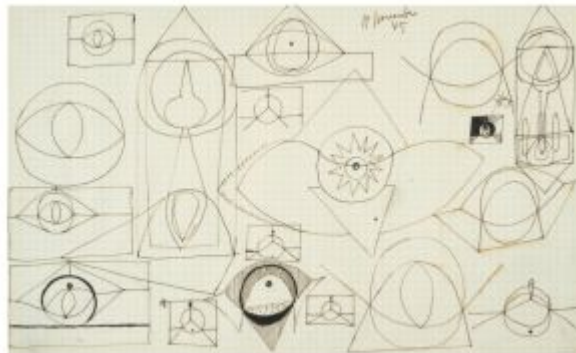


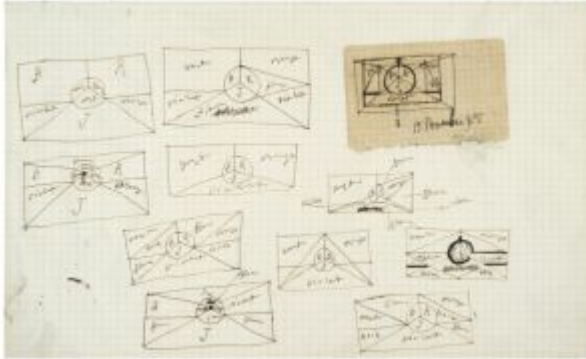
**Nature morte: pomme.** Paris. 18-November/1945.  
Collage [OïC]. 16,5 x 15,5 cm. Private collection.  
Formerly Marie-Thérèse Walter Collection.

**OPP.45:365**; PP.45:073c

**Étude de pommes.** Paris. 19-  
November/1945. Pen & ink on paper. 20,9  
x 33,9 cm. Sotheby's. #384, L15004,  
02/04/15. Formerly Jan Krugier Collection;  
Marie-Thérèse Walter Collection.

**OPP.45:141**; PP.45:075; Z.XIV:119;  
BU.75b\*:2





**Étude de pommes.** Paris. 19-November/1945.  
Pen & ink & collage on paper. 20,9 x 33,9 cm.  
Sotheby's. #384, L15004, 02/04/15. Formerly Jan  
Krugier Collection; Marie-Thérèse Walter  
Collection.

**OPP.45:157**; PP.45:074; Z.XIV:118; BU.75b\*:2

---

**Jeune fille aux grans cheveux (V).** Paris. 20-  
November/1945. Lithograph crayon & scraper on stone.  
38 x 32 cm. Sotheby's. #93, N09217, 11/03/14.

**OPP.45:191**; M:12.05.B; JR.12\*:200p; NY.47c\*:5





**Jeune Fille aux grands cheveux (V)**. Paris. 20-November/1945. Lithograph. 38,7 x 32 cm. Musée Picasso, Paris. Dation 1979.

**OPP.45:332**; M:12.05; MPP:3310

---

**Les deux femmes nues (III)**. Paris. 21-November/1945. Lithograph elaborated with pen & scrapings. [25 x 33] 27 x 35 cm. Christie's. #91, 7747, 09/17/09. Also Kunstmuseum Picasso, Münster.

**OPP.45:069**; M:16.03B; GS.85\*:93.III;  
JR.12:173p; MM.02\*:68p; VO.16:104p





**Pommes.** Paris. 21-November/1945. India ink & watercolor on squared paper. 21 x 35 cm. Fundació Palau, Caldes d'Estrac. (Inv 0000200).

**OPP.45:152**; PP.45:076; Z.XIV:117;  
BA.18\*:282p

---

**Les deux femmes nues (III).** Paris. 21-November/1945. Lithograph. 25,7 x 33,9 cm. Musée Picasso, Paris. Dation 1979.

**OPP.45:337**; M:16.03; MPP:3315





**Les deux femmes nues.** Paris. Post-21-November/1945. Composite print of two lithographic plates. 32,6 x 44,3 cm. Sotheby's. #82, N10447, 10/22/20. Formerly John Richardson Collection.

**OPP.45:196**; JR.12\*:363p

---

**Tête de jeune fille (V).** Paris. 22-November/1945. Lithograph crayon & scraper on stone. 32 x 26 cm. Musée Picasso, Paris. Dation 1979.

**OPP.45:198**; M:9.05; MPP:3300; JR.12\*:203p





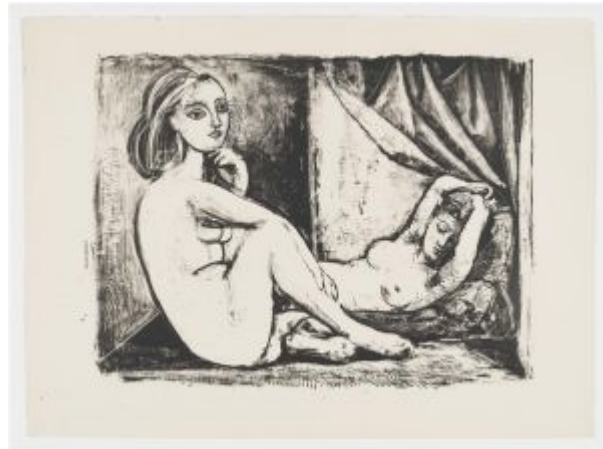
**Les deux femmes nues (IV)**. Paris. 22-  
November/1945. Lithograph. 28,5 x 36,5 cm.  
Sotheby's. #115, N09216, 10/30/14.

**OPP.45:238**; M:16.04.B

---

**Les deux femmes nues (IV)**. Paris. 22-  
November/1945. Lithograph. 25,7 x 34,5  
cm. Musée Picasso, Paris. Dation 1979.

**OPP.45:338**; M:16.04; MPP:3316





**Jeune fille aux grands cheveux (VI)**. Paris. 24-November/1945. Lithograph, edition 50. 38,1 x 31,8 cm. Kunstmuseum Picasso, Münster. (Inv 54.12). Also Christopher Clark Fine Art. 2005.

**OPP.45:067**; B.I:380; M:12.06.B; JR.12\*:201p; MM.02\*:85p; PD.16\*:n/a

---

**Tête de jeune fille (II)**. Paris. 24-November/1945. Lithograph pen & scraper on stone. 24 x 16,5 cm. Musée Picasso, Paris.

**OPP.45:193**; M:5.02; MPP:3287; JR.12\*:194p







**Les deux femmes nues (V)**. Paris. 24-November/1945. Lithograph. 28,5 x 36,5 cm. Sotheby's. #115, N09216, 10/30/14.

**OPP.45:230**; M:16.05.B

---

**Jeune fille aux grands cheveux (VI)**. Paris. 24-November/1945. Lithograph. 38,5 x 32 cm. Musée Picasso, Paris. Dation 1979.

**OPP.45:333**; M:12.06; MPP:3311





**Les deux femmes nues (V)**. Paris. 24-  
November/1945. Lithograph. 25,7 x 33,7 cm.  
Musée Picasso, Paris. Dation 1979.

**OPP.45:339**; M:16.05; MPP:3317

**Nature morte aux pommes**. Paris. 25-  
November/1945. Colored paper collage &  
crayon on card. 8,2 x 34 cm. Christie's.  
#200, 14240, 06/28/17. Formerly  
Christie's. #56, 5616, 02/07/14;  
Sotheby's. #468, 6489, 11/04/93; Marie-  
Thérèse Walter Collection.

**OPP.45:231**; PP.45:077; BU.75b\*:35;  
GE.73b\*:607; NY.88f\*:14p; PA.76e\*:24





**Tête de jeune fille (II).** Paris. 25-November/1945. Lithograph. 30 x 22 cm. Musée Picasso, Paris. Dation 1979.

**OPP.45:319**; M:7.02; MPP:3293

**Nature morte au verre.** Paris. 25-November/1945. Colored paper collage & wax crayon on card. 18,3 x 34 cm. Hélène Bailly Gallery. Formerly Christie's. #13, 22433, 04/04/23.

**OPP.45:360**; PP.45:076a; BS.78a\*:122; BS.78b\*:90; GE.73b\*:53; LO.82e\*:53





**Tête de jeune fille (VI)**. Paris. 26-November/1945. Lithograph, shadings accentuated with lithographic crayon, on Arches. 31,7 x 26 cm. Christie's. #9, 1322, 04/28/04.

**OPP.45:050**; M:9.06.B; JR.12\*:203p

---

**Les deux femmes nues (VI)**. Paris. 26-November/1945. Lithograph. 25 x 33 cm. Sotheby's. #29, L10161, 09/16/10.

**OPP.45:139**; M:16.06.B; GS.85\*:93.VI; JR.12:173p; LS.75:62





**Tête de jeune fille (III)**. Paris. 26-November/1945. Lithograph wash & scraper on stone. 24 x 16,5 cm. Musée Picasso, Paris. Dation 1979.

**OPP.45:194**; M:5.03; MPP:3288; JR.12\*:195p

**Tête de jeune fille**. Paris. 26-November/1945. Lithograph. 32 x 26,2 cm. Musée Picasso, Paris. Dation 1979.

**OPP.45:326**; M:9.06; MPP:3301





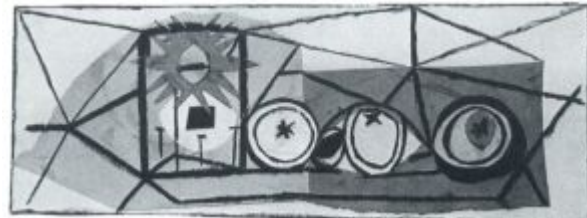
**Les deux femmes nues (VI)**. Paris. 26-  
November/1945. Lithograph. 25,5 x 33,9 cm.  
Musée Picasso, Paris. Dation 1979.

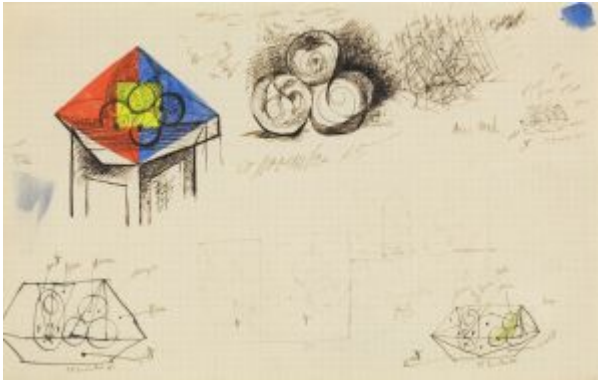
**OPP.45:340**; M:16.06; MPP:3318

---

**Nature morte: trois pommes**. Paris. 26-  
November/1945. Collage [OïC]. 15 x 42  
cm. Private collection. Formerly Marie-  
Thérèse Walter Collection.

**OPP.45:366**; PP.45:077a





**Études.** Paris. 28-November/1945. Gouache & ink on graph paper. [20,3 x 33,7] 21 x 33,3 cm. Beck and Eggeling International Fine Art. Formerly Heather James Fine Art; Adler and Conkright Fine Art. 2012.

**OPP.45:180**; PP.45:078; Z.XIV:120

---

**Scènes de corrida.** Paris. [December]/1945. Lithograph. 48,3 x 61 cm. Phillips. #18, NY030013, 04/29/13.

**OPP.45:242**





**Scènes de corrida.** Paris. [December]/1945.  
Lithograph. 48,3 x 61 cm. Phillips. #18,  
NY030013, 04/29/13.

---

**OPP.45:243**

**Scènes de corrida.** Paris.  
[December]/1945. Lithograph. 48,3 x 61  
cm. Phillips. #18, NY030013, 04/29/13.

---

**OPP.45:244**







**La rentrée du taureau.** Paris. December/1945.  
Lithograph on Arches. 16,3 x 31,6 cm. Christie's.  
#175, 1322, 04/28/03. Also Museu Picasso,  
Barcelona.

**OPP.45:039**; B.I:386; M:167; MPB:70.027;  
GP.96:268p; MG.10a\*:30

---

**Tête de jeune fille (III).** Paris. 2-December/1945.  
Lithograph with scraper on Arches. 30,4 x 22,8 cm.  
Kunstmuseum Picasso, Münster. (Inv 45.7).

**OPP.45:048**; M:7.03.B; MM.02\*:87p



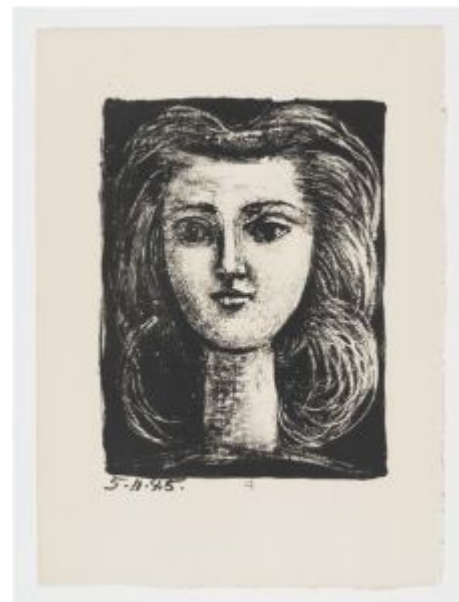


**Tête de jeune fille (VII)**, Paris. 2-December/1945. Lithograph scraper & blade on stone. 32 x 26 cm. Private collection.

**OPP.45:200**; M:9.07.B; JR.12\*:204p

**Tête de jeune fille**. Paris. 2-December/1945. Lithograph. 30 x 22 cm. Musée Picasso, Paris. Dation 1979.

**OPP.45:320**; M:7.03; MPP:3294





**Tête de jeune fille.** Paris. 2-December/1945. Lithograph. 32 x 26 cm. Musée Picasso, Paris. Dation 1979.

**OPP.45:327**; M:9.07; MPP:3302

**Page de croquis (Têtes d'enfants et de chevaux).** Paris. 4-December/1945. Lithograph on Arches. 32,6 x 44 cm. Christie's. #15, 1322, 04/28/03.

**OPP.45:036**; B.I:381; M:18.B;  
GB.19\*:172





**Page de croquis (Têtes d'enfants et de chevaux)**. Paris. 4-December/1945. Lithograph. 27 x 40 cm. Musée Picasso, Paris. Dation 1979.

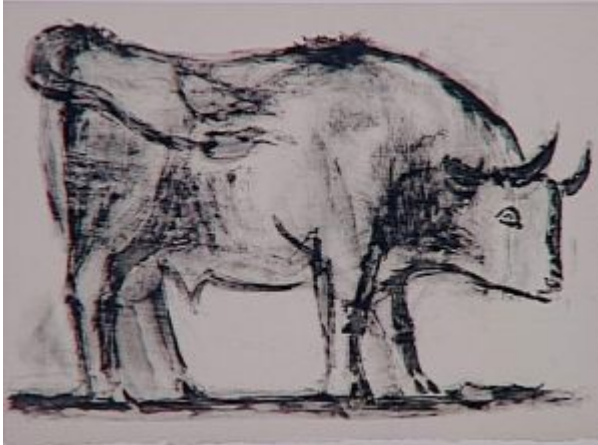
**OPP.45:349**; M:18; MPP:3343

---

**Le taureau I**. Paris. 5-December/1945. Wash in lithographic ink on stone, printed on Arches wove paper. 28,9 x 41 cm. Fundación Almine & Bernard Ruiz-Picasso para el Arte. Also The Norton Simon Museum, Pasadena, CA.

**OPP.45:072**; M:17.01.B; BF.14:128p; BS.55:100p; ED.07\*:48a; GC.96:246p; HO.16a\*:154p; JB.96:93; JR.10\*:124p; JV.06\*:35p; ME.82a\*:102; MF.10\*:154p; MI.01\*:119; PA.19e\*:79; PT.05\*:8; SG.88\*:74; TE.21\*:136; UP.00:887; WR.80\*:390p





**Le taureau I.** Paris. 5-December/1945.  
Lithograph. 29 x 42 cm. Musée Picasso, Paris.  
Dation 1979.

**OPP.45:342**; M:17.01; MPP:3332; SY.11\*:n/a

**Têtes de béliers.** Paris. 7-  
December/1945. Lithograph on Arches.  
24,1 x 34 cm. Christie's. #16, 1322,  
04/28/03.

**OPP.45:037**; B.I:382; M:19.B;  
NY.47c\*:10





**Têtes de béliers.** Paris. 7-December/1945.  
Lithograph. 34 x 23 cm. Musée Picasso, Paris.  
Dation 1979.

**OPP.45:350**; M:19; MPP:3344

**Le taureau II.** Paris. 12-December/1945.  
Wash in lithographic ink & pen applied over  
the first state, printed on Arches wove  
paper. 28,9 x 41 cm. Fundación Almine &  
Bernard Ruiz-Picasso para el Arte.

**OPP.45:073**; M:17.02.B; CP.95:33p;  
ED.07\*:48b; GC.96:246p; HO.16a\*:154p;  
JB.96:93; JC.01b\*:103; JR.10\*:124p;  
JV.06\*:35p; ME.82a\*:103; MF.10\*:154p;  
MI.01\*:120; PA.19e\*:80; PT.05\*:9;  
SD.13a\*:176; SG.88\*:74; TE.21\*:137;  
UP.00:888; VK.97\*:121p; WR.80\*:390p



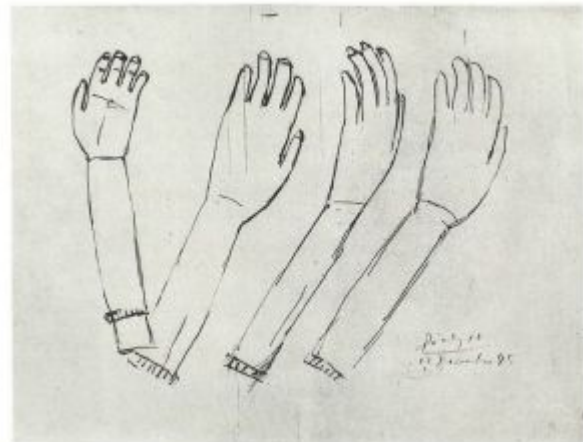


**Le taureau II.** Paris. 12-December/1945.  
Lithograph. 29 x 42 cm. Musée Picasso, Paris.  
Dation 1979.

**OPP.45:343**; M:17.02; MPP:3333; SY.11\*:n/a

**Études d'après une man en bois de Ile de Paques.** Paris. 13-December/1946. Ink on paper. S/U. Private collection.

**OPP.45:102**; PP.45:079; Z.XIV:129





**Étude.** Paris. 14-December/1945. Ink on cut-out & pasted newsprint from L'Humanité, 12/14/45 glued on paper. 21,5 x 17 cm. Musée Picasso, Paris. (Inv APCS A.II.2).

**OPP.45:220**; AB.00\*:158

**Deux petits tereaux.** Paris. 15-December/1945. Lithograph on Arches. 14,9 x 26,7 cm. Christie's. #10, 1322, 04/28/03.

**OPP.45:035**; B.I:1342; M:10.B;  
CK.04\*:98





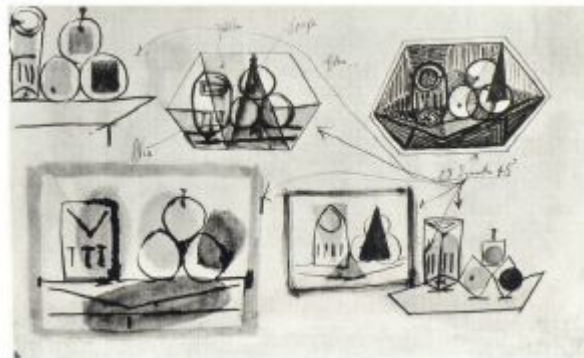


**Scènes de corrida.** Paris. 15-December/1945.  
Lithograph. 40 x 60 cm. Private collection.

**OPP.45:100**; B.I:1343; M:11; R:105;  
WW.91:461p

**Études.** Paris. 15-December/1945. Ink &  
watercolor [OïC]. 21 x 35 cm. Private  
collection.

**OPP.45:284**; PP.45:080; Z.XIV:121;  
GE.73b\*:103





**Deux petits taureaux.** Paris. 15-December/1945.  
Lithograph. 26 x 14 cm. Musée Picasso, Paris.  
Dation 1979.

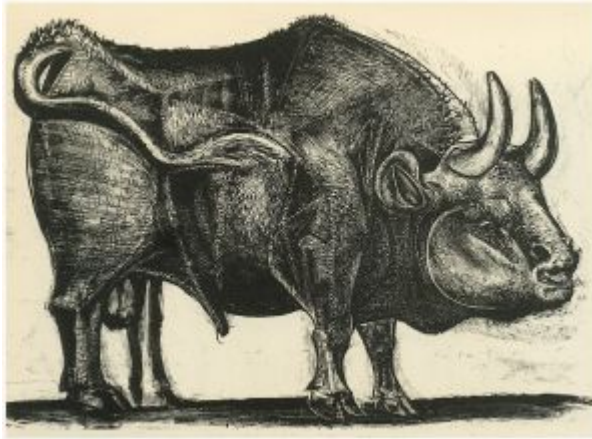
**OPP.45:328**; M:10; MPP:3306

---

**Tête de jeune fille (IV).** Paris. 17-December/1945.  
Lithograph. 28 x 21,8 cm. Musée Picasso, Paris. Dation  
1979.

**OPP.45:316**; M:5.04; MPP:3289





**Le taureau III.** Paris. 18-December/1945.  
Scraping with the flat of the blade followed by very elaborate pen work on lithographic stone, printed on Arches wove paper. 28,9 x 41cm. Fundación Almine & Bernard Ruiz-Picasso para el Arte.

**OPP.45:074**; M:17.03.B; BS.55:100p;  
ED.07\*:48c; GC.96:246p; HO.16a\*:155p;  
IW.93:31p; JB.96:93; JR.10\*:125p; JV.06\*:34p;  
ME.82a\*:104; MF.10\*:154p; MI.01\*:121;  
OW.13:284-285p; PA.19e\*:81; PT.05\*:10;  
SG.88\*:74; TE.21\*:138; UP.00:889;  
VK.97\*:121p; WR.80\*:390p; WW.91:460p

---

**Le taureau III.** Paris. 18-December/1945.  
Lithograph. 31,2 x 44 cm. Musée Picasso,  
Paris. Dation 1979.

**OPP.45:344**; M:17.03; MPP:3334





**Tête de femme (II)**. Paris. 20-December/1945. Lithograph on Arches paper, edition 45. 30,9 x 24 cm. Christie's. #4, 1322, 04/28/03.

**OPP.45:013**; B.I:384; M:4.02B; AS.60:105p; JR.12\*:193p

**Tête de femme (II)**. Paris. 20-December/1945. Lithograph. 31 x 24 cm. Musée Picasso, Paris. Dation 1979.

**OPP.45:314**; M:4.02; MPP:3285





**Le cirque.** Paris. 20-December/1945. Lithograph.  
32 x 24 cm. Musée Picasso, Paris. Dation 1979.

**OPP.45:354**; M:24; MPP:3348

---

**Le cirque.** Paris. 20~23-December/1945.  
Lithograph on Arches. 29,8 x 39,9 cm.  
Christie's. #20, 1322, 04/28/03.

**OPP.45:009**; B.I:385; M:24.C;  
DC.87:395; GP.96:268p; LV.06\*:n/a;  
NY.47c\*:30; PA.20j\*:39





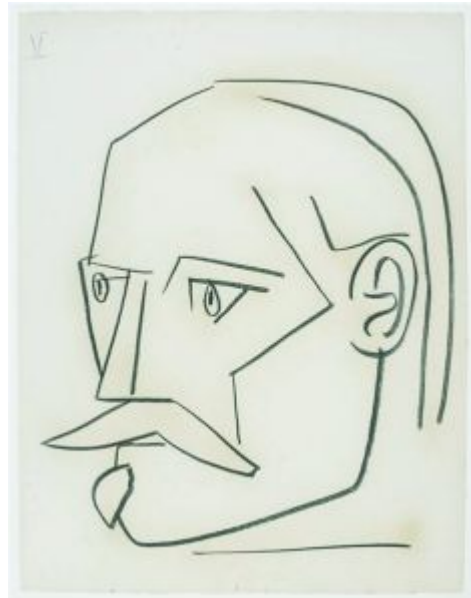
**Portrait de Paul Langevin.** Paris. [End]/1945. Charcoal on paper. 66 x 50,5 cm. Musée Picasso, Paris. Dation 1979.

**OPP.45:089**; MPP:1340; PP.45:082; PA.19d\*:221

---

**Portrait de Paul Langevin.** Paris. [End]/1945. [Pen] Charcoal on paper. 66 x 50,5 cm. Musée Picasso, Paris. Dation 1979.

**OPP.45:090**; MPP:1341; PP.45:083; EM.55:223p



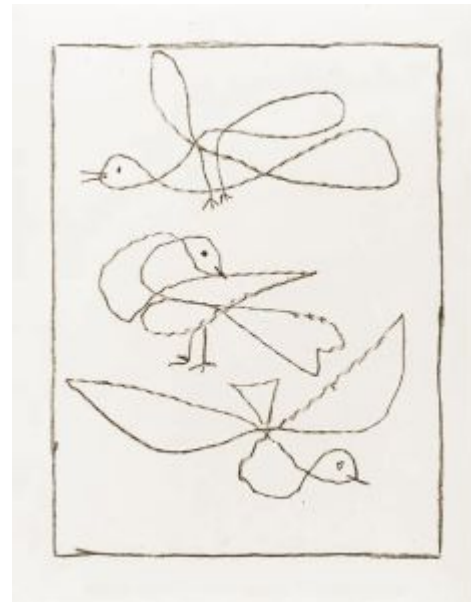


**Le taureau IV.** Paris. 22-December/1945. Pen & scrapings on lithographic stone, printed on Arches wove paper. 28,9 x 41 cm. Fundación Almine & Bernard Ruiz-Picasso para el Arte. Also Christie's. #3, 6683, 10/09/02.

**OPP.45:020**; M:17.04.B; BF.14:128p; BS.55:101p; ED.07\*:48d; GC.96:246p; HO.16a\*:155p; JB.96:93; JR.10\*:125p; JV.06\*:35p; ME.82a\*:105; MF.10\*:154p; MI.01\*:122; PA.19e\*:82; PT.05\*:11; SD.13a\*:178; SG.88\*:74; TE.21\*:139; UP.00:890; WR.80\*:390p

**Trois oiseaux.** Paris. 22-December/1945. Lithograph on Arches. 32 x 24,1 cm. Christie's. #18, 1322, 04/28/03.

**OPP.45:038**; M:22.B





**Oiseaux en vol.** Paris. 22-December/1945. Lithograph on Arches. 41 x 31,1 cm. Christie's. #19, 1322, 04/28/03.

**OPP.45:040**; M:23.B

**Taureaux, moutons et oiseaux.** Paris. 22-December/1945. Lithograph on Arches. 30,5 x 40,3 cm. Christie's. #17, 1322, 04/28/03.

**OPP.45:045**; B.I:1344; M:21.B







**Le taureau IV.** Paris. 22-December/1945.  
Lithograph. 29 x 42 cm. Musée Picasso, Paris.  
Dation 1979.

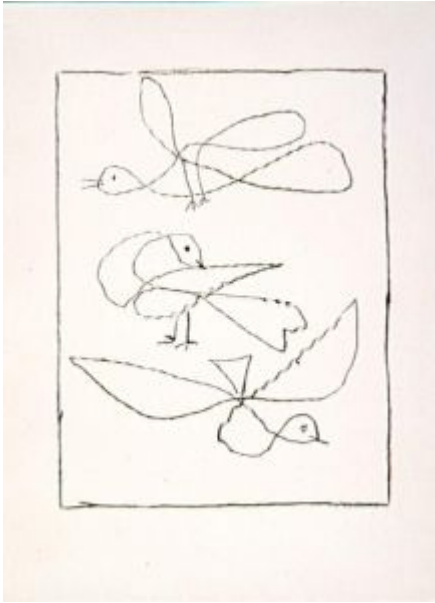
**OPP.45:345**; M:17.04; MPP:3335

---

**Taureaux, béliers et oiseaux.** Paris. 22-December/1945. Lithograph. 30,5 x 40 cm.  
Musée Picasso, Paris. Dation 1979.

**OPP.45:351**; M:21; MPP:3345





**Trois oiseaux.** Paris. 22-December/1945. Lithograph. 32,3 x 24,2 cm. Musée Picasso, Paris. Dation 1979.

**OPP.45:352;** M:22; MPP:3346

---

**Oiseaux volant.** Paris. 22-December/1945. Lithograph. 41 x 31,3 cm. Musée Picasso, Paris. Dation 1979.

**OPP.45:353;** M:23; MPP:3347





**Le cirque.** Paris. 23-December/1945. Lithograph.  
32 x 24 cm. Musée Picasso, Paris. Dation 1979.

**OPP.45:355**; M:24.B; MPP:3349

---

**Le taureau V.** Paris. 24-December/1945.  
Pen & scraper on lithographic stone,  
printed on Arches wove paper. 28,9 x 41  
cm. Fundación Almine & Bernard Ruiz-  
Picasso para el Arte. Also Sotheby's. #2,  
N09217, 11/03/14.

**OPP.45:075**; M:17.05.B; BS.55:101p;  
CH.97:60p; ED.07\*:48e; GC.96:246p;  
HO.16a\*:156p; JB.96:93; JC.01b\*:104;  
JR.10\*:126p; JV.06\*:36p; ME.82a\*:106;  
MF.10\*:154p; MI.01\*:123; PA.19e\*:83;  
PT.05\*:12; SG.88\*:74; TE.21\*:140;  
UP.00:891; WR.80\*:390p





**Le taureau V.** Paris. 24-December/1945.  
Lithograph. 29 x 42 cm. Musée Picasso, Paris.  
Dation 1979.

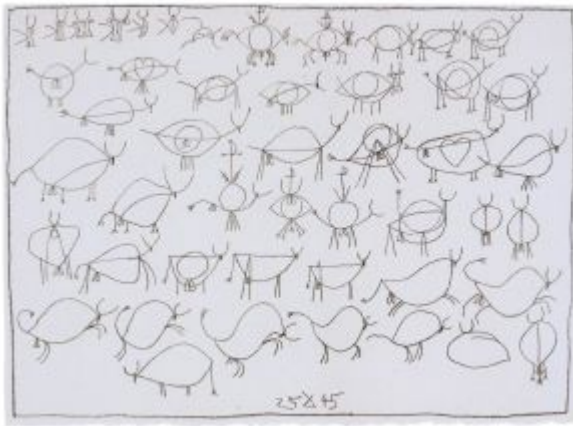
**OPP.45:346**; M:17.05; MPP:3336; SY.11\*:n/a

---

**Le taureau.** Paris. 24~25-  
December/1945. Gouache & India ink on  
cardboard box. [13,3 x 29,1] 15 x 31 cm.  
Musée Picasso, Paris. Dation 1979.

**OPP.45:070**; MPP:1339; PP.45:081;  
Z.XIV:130; GB.19\*:174; JC.01b\*:101;  
WR.80\*:390p





**Taureaux.** Paris. 25-December/1945. Lithograph on Arches. 32,2 x 44,3 cm. Christie's. #24, 1322, 04/28/03.

**OPP.45:034;** B.I:1345; M:28.B; BS.55:59p; GB.19\*:173; JC.01b\*:102

**Profil de taureau.** Paris. 25-December/1945. Lithograph on Arches. 29 x 42 cm. Christie's. #23, 1322, 04/28/03.

**OPP.45:043;** M:27.B





**Taureau de profil.** Paris. 25-December/1945.  
Lithograph. 29,6 x 42,3 cm. Musée Picasso, Paris.  
Dation 1979.

**OPP.45:356**; M:27; MPP:3352

**Page de taureaux.** Paris. 25-  
December/1945. Lithograph. 31,7 x 43,3  
cm. Musée Picasso, Paris. Dation 1979.

**OPP.45:357**; M:28; MPP:3353





**Le taureau VI.** Paris. 26-December/1945. Pen & scraper on lithographic stone, printed on Arches wove paper. 28,9 x 41 cm. Fundación Almine & Bernard Ruiz-Picasso para el Arte.

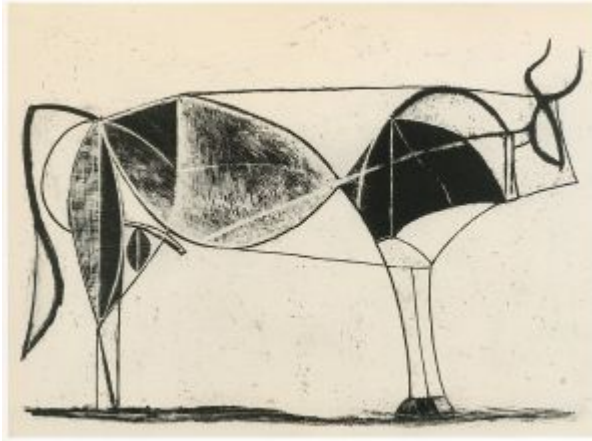
**OPP.45:076**; M:17.06.B; BS.55:102p; CH.97:61p; ED.07\*:48f; GC.96:246p; HO.16a\*:156p; JB.96:93; JC.01b\*:105; JR.10\*:126p; JV.06\*:37p; ME.82a\*:109; MF.10\*:154p; MI.01\*:124; PA.19e\*:84; PT.05\*:13; SG.88\*:74; TE.21\*:141; UP.00:892; VK.97\*:122p; WR.80\*:391p

---

**Le taureau VI.** Paris. 26-December/1945. Lithograph. 29 x 42 cm. Musée Picasso, Paris. Dation 1979.

**OPP.45:347**; M:17.06; MPP:3337





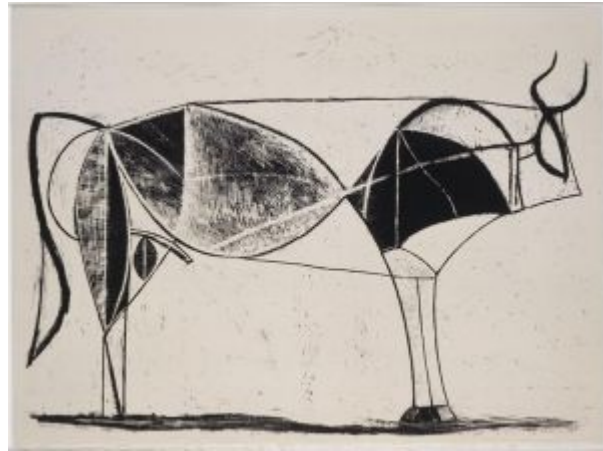
**Le taureau VII.** Paris. 28-December/1945. Pen & scrapings on lithographic stone, printed on Arches wove paper. 28,9 x 41 cm. Fundación Almine & Bernard Ruiz-Picasso para el Arte.

**OPP.45:077**; M:17.07.B; BF.14:130p;  
ED.07\*:48g; GC.96:246p; HO.16a\*:157p;  
JB.96:93; JC.01b\*:106; JR.10\*:127p; JV.06\*:37p;  
ME.82a\*:107; MF.10\*:154p; MI.01\*:125;  
PA.19e\*:85; PT.05\*:14; SG.88\*:74; TE.21\*:142;  
UP.00:893; VK.97\*:122p; WR.80\*:391p

---

**Le taureau VII.** Paris. 28-December/1945. Lithograph. 29 x 42 cm. Musée Picasso, Paris. Dation 1979.

**OPP.45:348**; M:17.07; MPP:3338;  
SY.11\*:n/a







**Les deux femmes nues (VII.III)**. Paris. 30-December/1945. Lithograph with extensive hand-coloring. 32,7 x 50,6 cm. Sotheby's. #133, N08544, 04/30/09.

**OPP.45:121**; M:16.07.03; GS.85\*:93.VII

---

**Les deux femmes nues (VII.I)**. Paris. 30-December/1945. Lithograph. 28,5 x 36,5 cm. Sotheby's. \$72, N09217, 11/03/14.

**OPP.45:236**; M:16.07.01





**Les deux femmes nues (VII.II)**. Paris. 30-December/1945. Lithograph. 28,5 x 36,5 cm. Sotheby's. #115, N09216, 10/30/14.

**OPP.45:237**; M:16.07.02

---

**Les deux femmes nues (VII.IV)**. Paris. 30-December/1945. Lithograph [Reversed version of *Les deux femmes nues (VII.I)*]. 33 x 44,3 cm. Sotheby's. #202, L20010, 06/18/20.

**OPP.45:295**; M:16.07.04





**Les deux femmes nues (VII)**. Paris. 30-December/1945. Lithograph. 32,1 x 42,7 cm. Musée Picasso, Paris. Dation 1979.

**OPP.45:341**; M:16.07; MPP:3319

---

**Femme debout**. Paris. 1945 [1946~1947]. Bronze. [26,7] 23,8 cm. McNay Art Museum, San Antonio, TX. (Inv 1975.70). Mary and Sylvan Lang Collection. Also Christie's. #1203, 12071, 05/13/16.

**OPP.45:018**; PP.45:087; WS:304.II; LA.63\*:n/a; NY.49a\*:n/a; NY.56c\*:n/a; NY.60c\*:n/a; RP.67b\*:84





**Femme debout.** Paris. 1945. Bronze with brown patina. 20,3 cm. Sotheby's. #54, PF2216, 10/25/22. Also Christie's. #203, 6883, 02/03/04.

---

**OPP.45:057**; PP.45:095; WS:311.II; KB.01\*:134a;  
NY.49a\*:n/a; NY.60c\*:n/a; ST.59\*:n/a

---

**Femme debout.** Paris. 1945. Bronze with brown patina, edition 10 [Cast 1947 after *Femme debout*]. [14,2] [13,5] [13,7] 13,8 cm. Christie's. #346, 7190, 02/07/06. Also Galerie Kornfeld und Cie, Bern. #00143, 06/17/11.

---

**OPP.45:097**; PP.45:108; WS:329.II; CH.68a\*:n/a;  
MR.81\*:135; NY.49a\*:n/a; NY.51c\*:n/a; NY.52\*:n/a;  
NY.60c\*:n/a





**Femme debout.** Paris. 1945. Bronze with brown patina, edition 10.  
[21,9] [22] 22,1 cm. Christie's. #247, N10148, 11/13/19. Also Christie's.  
#372, 15979, 11/12/18. Also Christie's. #421, 1995, 05/07/08; Christie's.  
#430, 7355, 02/07/07; Sotheby's. #131, 4496M, 12/11/80.

**OPP.45:110**; PP.45:099; WS:315.II; NY.49a\*:n/a; NY.60c\*:n/a;  
SD.67\*:182; TE.21\*:98

---

**Femme debout.** Paris. 1945. Fired clay. 19,5 cm.  
Private collection.

**OPP.45:117**; WS:328.I



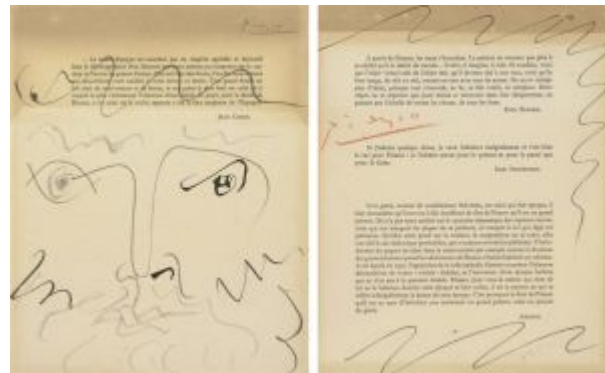


**Femme debout I.** Paris. 1945 [~1947]. Bronze, edition 10. 22,2 cm. The Norton Simon Museum, Pasadena, CA. (Inv M.1968.01.1.S). Norton Simon Art Foundation. Also Sotheby's. #263, 06/25/97.

**OPP.45:124**; PP.45:089; WS:305.II; AM.53\*:n/a; JR.12\*:263p; KB.49:95; NY.49a\*:n/a; NY.56c\*:n/a; NY.60c\*:n/a; ST.59\*:n/a

**Tête d'homme.** Paris. 1945. Brush, India ink & gray wash on book page. 27,9 x 22,2 cm. Christie's. 66, 2290, 03/10/10.

**OPP.45:134**





**Femme debout.** Paris. 1945 [1947]. Bronze, dark brown patina, edition 10 [Cast after *Femme debout*]. [19] [19,8] 20 cm. Christie's. #1204, 12071, 05/13/16. Also Christie's. #347, 7859, 06/24/10; Christie's. #376, 11/16/88.

**OPP.45:136**; PP.45:102; WS:323.II; JR.10\*:83p; KB.01\*:134e; LA.63\*:n/a; LO.59\*:n/a; LO.98a\*:n/a; NY.49a\*:n/a; NY.60c\*:n/a

---

**Le homard.** Paris. 1945. Aquatint on wove paper [After *Le homard*]. 26,6 x 46,1 cm. Christie's. #392, 7248, 03/29/06.

**OPP.45:140**





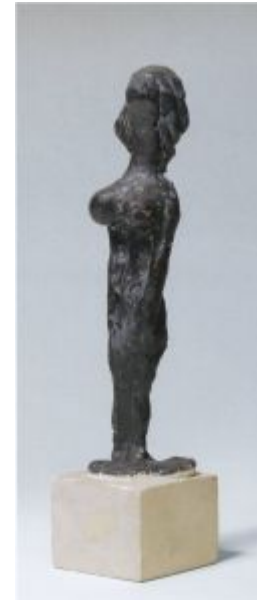
**Tête de femme (Paul Éluard, À Pablo Picasso).** Paris. 1945. Etching. 20 x 16,5 cm. The Museum of Modern Art, NYC. (Inv 982.1964). The Louis E. Stern Collection.

**OPP.45:149**; GC:43.2; BA.19c:40p

---

**Nu debout.** Paris. 1945. Bronze. 31,5 x 7,5 x 6 cm. Fundación Almine & Bernard Ruiz-Picasso para el Arte. Also Galerie Gmurzynska, Zurich.

**OPP.45:153**; WS:303.II; JR.12\*:264p; LA.63\*:n/a; LO.59\*:n/a; NY.49a\*:n/a; NY.56c\*:n/a; NY.60c\*:n/a; TE.21\*:100; WO.92\*:51







**Femme debout.** Paris. 1945. Tinted foundry plaster. 14 x 4,8 x 4,5 cm.  
Kravis Collection.

**OPP.45:161**; WS:329.I; TU.15\*:99

---

**Femme debout.** Paris. 1945. Terracotta. 20,5 x 8 x 7,5 cm. Kravis Collection.

**OPP.45:162**; WS:322.I; TU.15\*:100





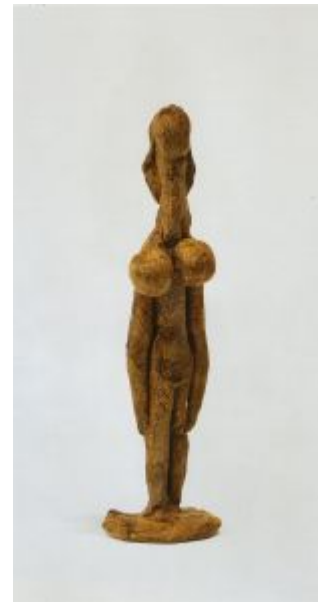
**Femme assise.** Vallauris. 1945 [1947]. Terracotta. 12,5 x 6,5 x 5 cm. The Picasso Estate.

**OPP.45:164**; MI.01\*:136

---

**Femme debout.** Vallauris. 1945. Glazed terracotta. 18,5 cm. The Picasso Estate.

**OPP.45:165**; WS:310.I; MI.01\*:137





**Pigeon ramier.** Paris. [1945]. India ink on paper [Obverse of *Soleil*]. 28,5 x 23,5 cm. Artcurial. #1, 2054, 12/06/11.

**OPP.45:167**

---

**Soleil.** Paris. [1945]. India ink wash on paper [Reverse of *Pigeon ramier*]. 28,5 x 23,5 cm. Artcurial. #1, 2054, 12/06/11.

**OPP.45:168**



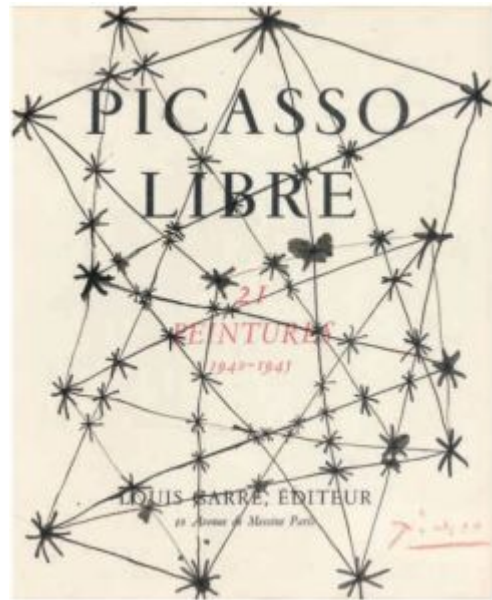


**Nature morte.** Paris. [1945]. Ink on paper [Obverse of . 28 x 23 cm. Artcurial. #2, 2054, 12/06/11.

**OPP.45:169**

**Constellation.** Paris. [1945]. Ink on paper [Reverse of *Nature morte*]. 28 x 23 cm. Artcurial. #2, 2054, 12/06/11.

**OPP.45:170**





**Tête de femme (Paul Éluard, À Pablo Picasso)**. Paris. 1945. Etching. 20,2 x 16,2 cm. The Museum of Modern Art, NYC. (Inv 281.1975). Gift of Mrs. Gilbert W. Chapman.

**OPP.45:172**; GC:43.3; JR.12:175p

---

**Faune**. Paris. 1945. Carved stone. 7 x 5,5 cm. Private collection.

**OPP.45:175**; RD.11\*:33





**Femme accroupie.** Paris. 1945. Bronze. 9 x 5,8 x 5,5 cm.  
Private collection.

**OPP.45:201**; JR.12\*:262p

---

**Femme debout.** Paris. 1945. Terracotta, modeled & incised.  
10.6 x 3,7 x 1,1 cm. Marina Picasso Collection.

**OPP.45:232**; FB.13\*:13p





**Femme debout.** Paris. 1945. Terracotta. 26,5 x 8 x 6,9 cm. Kravis Collection.

**OPP.45:233**; WS:314.I; TU.15\*:101

**Le Désir attrapé par la queue.** Paris. 1945. Facsimile edition. 31,5 x 24 cm. Christie's. #217, 3587, 04/30/14.

**OPP.45:234**





**Buste de femme.** Paris. 1945. Ink & Kraft paper collage on paper. 33,6 x 56,5 cm. Héléne Bailly Gallery. Formerly Christie's. #59, 12467, 12/01/15.

**OPP.45:246**

**Tête.** Golfe-Juan. 1945. Engraved pebble. 3 x 1,8 x 0.5 cm. Private collection.

**OPP.45:249**; PP.45:117; WS:291.A; TU.15\*:92







**Femme debout.** Paris. 1945. Plaster. 26.7 cm. Sotheby's. #516, L16005, 02/05/16.

**OPP.45:250;** WS:314.Ib

---

**Portrait de femme.** Paris. 1945. Pencil on paper. 25,1 x 32,3 cm. Sotheby's. #522, L16005, 02/05/16.

**OPP.45:251**





**Femme debout.** Paris. 1945. Plaster. 20,3 cm. Sotheby's.  
#618, L16005, 02/05/16.

**OPP.45:252**; WS:322.Ib; NY.89c\*:24

---

**Femme debout.** Paris. 1945. Plaster. 14,9 cm. Sotheby's.  
#637, L16005, 02/05/16. Formerly Marina Picasso  
Collection.

**OPP.45:253**; WS:316.I





**Femme debout.** Paris. 1945. Plaster. 20,9 cm. Sotheby's. #70, N09727, 05/18/17. Formerly Marina Picasso Collection.

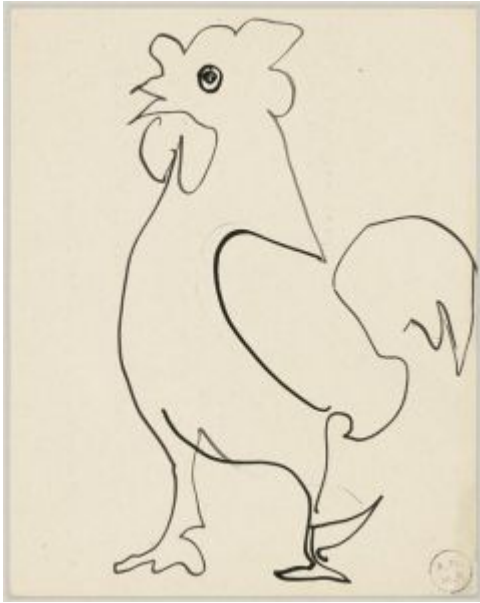
**OPP.45:257**; WS:308.I; VC.98\*:16

---

**Femme au miroir.** Paris. 1945. Pen & ink on paper. 65,4 x 52,7 cm. Stern Pissarro Gallery, London. 2018. Formerly Sotheby's. #401, N09741, 11/15/17.

**OPP.45:261**; TO.68\*:n/a



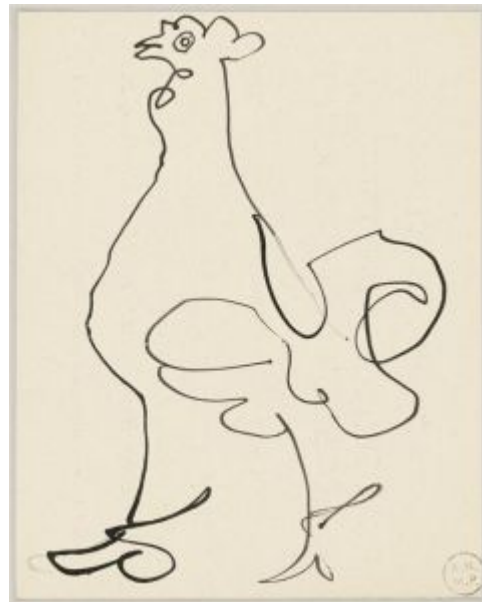


**Coq dessiné à l'encre au dos d'une invitation pour une exposition d'un ensemble d'oeuvres contemporaines.** Paris. 1945. Pen & India ink on paper. 14,2 x 11,2 cm. Musée Picasso, Paris. (Inv 515AP/B/2/9).

**OPP.45:262**; GB.19:275p

**Coq dessiné à l'encre au dos d'une invitation pour une exposition d'un ensemble d'oeuvres contemporaines.** Paris. 1945. Pen & India ink on paper. 14,2 x 11,2 cm. Musée Picasso, Paris. (Inv 515AP/B/2/8).

**OPP.45:263**; GB.19:274p





**Coq dessiné à l'encre au dos d'une invitation pour une exposition d'un ensemble d'oeuvres contemporaines.** Paris. 1945. Pen & India ink on paper. 14,2 x 11,2 cm. Musée Picasso, Paris. (Inv 515AP/B/2/7).

**OPP.45:264**; GB.19:274p

**Coq dessiné à l'encre au dos d'une invitation pour une exposition d'un ensemble d'oeuvres contemporaines.** Paris. 1945. Pen & India ink on paper. 14,2 x 11,2 cm. Musée Picasso, Paris. (Inv 515AP/B/2/10).

**OPP.45:265**; GB.19:275p



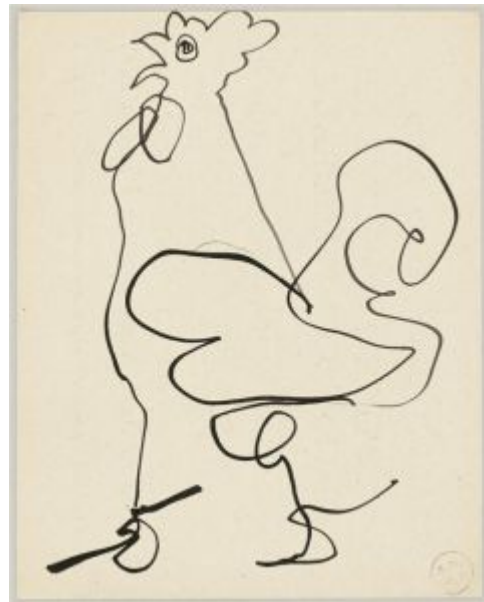


**Coq dessiné à l'encre au dos d'une invitation pour une exposition d'un ensemble d'oeuvres.** Paris. 1945. Pen & India ink on paper. 14,2 x 11,2 cm. Musée Picasso, Paris. (Inv 515AP/B/2/5).

**OPP.45:266**; GB.19:275p

**Coq dessiné à l'encre au dos d'une invitation pour une exposition d'un ensemble d'oeuvres contemporaines.** Paris. 1945. Pen & India ink on paper. 14,2 x 11,2 cm. Musée Picasso, Paris. (Inv 515AP/B/2/6).

**OPP.45:267**; GB.19:274p





**Croquis d'une chèvre sur un morceau d'enveloppe kraft.** Paris. 1945. Conté crayon on paper. 22,2 x 19,5 cm.. Musée Picasso, Paris. (Inv 515AP/B/3/9). Gift of Picasso Estate.

**OPP.45:268**; PP.20\*:346

**Femme debout.** Paris. 1945. Bronze (brown patina), edition 2 [Cast after *Femme debout*]. 19,5 x 9,5 x 6 cm. Sotheby's. #137, N10787, 11/17/21. Formerly The Art Institute of Chicago. (Inv 1967.687). Grant J. Pick Purchase Fund. Also Christie's. #323, 15973, 05/16/18. Sotheby's. #133, N08486, 11/05/08; Christie's. #1201, 12071, 05/13/16.

**OPP.45:275**; PP.45:107; WS:328.II; IR.65\*:n/a; JR.10\*:84p; NY.49a\*:n/a; NY.56c\*:n/a; NY.60c\*:n/a; RP.67c\*:110p





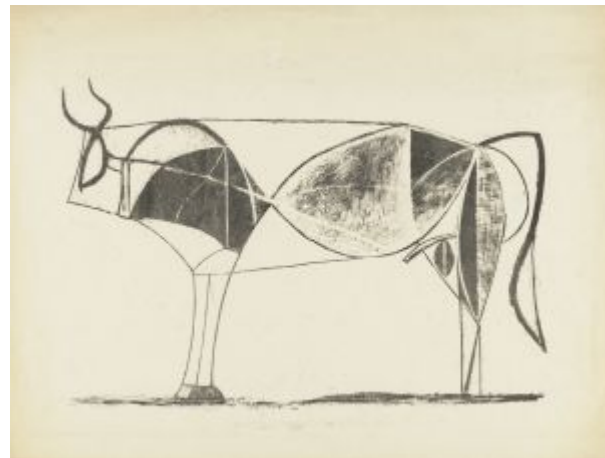
**Le taureau VII.** Paris. 1945. Lithograph. 31 x 46,8 cm. The Museum of Modern Art, NYC. (Inv 152.1979). Mrs. Gilbert W. Chapman Fund.

**OPP.45:288**

---

**Le taureau X.** Paris. 1945. Lithograph. 32,1 x 45,5 cm. The Museum of Modern Art, NYC. (Inv 153.1979 ). Mrs. Gilbert W. Chapman Fund.

**OPP.45:289**







**Femme debout.** [Paris]. [1945] [1947]. Bronze. 14,5 x 3,5 x 3,5 cm.  
Museo Picasso, Málaga. Gift of Christine Ruiz-Picasso.

**OPP.45:290**; MPM:1.62A; PP.45:090; WS:306.II; GS.03:1.100;  
LA.63\*:n/a; NC.17\*:104; NY.49a\*:n/a; NY.60c\*:n/a; TE.21\*:99

---

**Femme debout.** Paris. 1945. Bronze. 14,5 cm. Private collection.

**OPP.45:291**; PP.45:100; WS:316



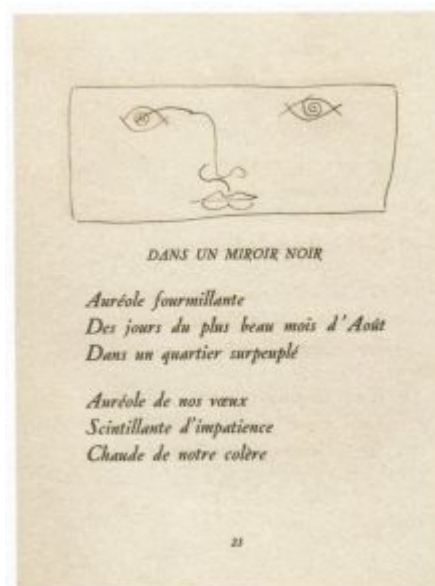


**Femme nue debout.** Paris. 1945. Bronze. 20,5 x 4,5 x 3,3 cm. Musée des Beaux-Arts, Grenoble. (Inv DG 1953-2-2). On deposit from Musée National d'Art Moderne, Centre Georges Pompidou, Paris. (Inv AM 956 S).

**OPP.45:292**; GB.19\*:164

**Masque: visage (Jours de gloire, histoire de la libération de Paris).** Paris. [1945]. Printed page [After *Masques: visages VII*]. S/U. Private collection.

**OPP.45:296**; BA.19c\*:43p

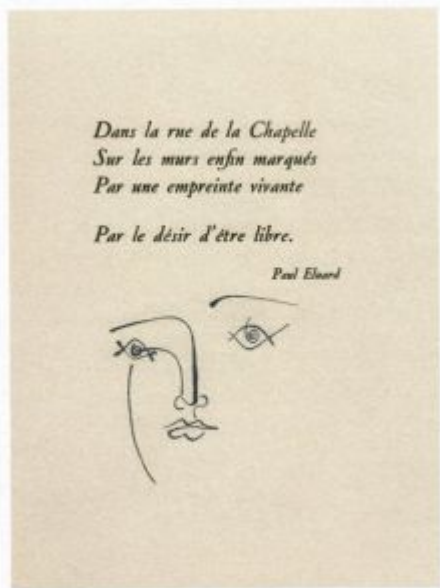


DANS UN MIROIR NOIR

*Auréole fourmillante  
Des jours du plus beau mois d'Août  
Dans un quartier surpeuplé*

*Auréole de nos vœux  
Scintillante d'impatience  
Chaud de notre colère*

23



**Visage (Jours de gloire, histoire de la libération de Paris).**  
Paris. [1945]. Printed page. S/U. Private collection.

**OPP.45:297**; BA.19c\*:43p

**Nusch Éluard et Dora Maar (Paul Éluard, À Pablo Picasso).** Paris. 1945. Printed page. 25 x 19 cm. Museu Picasso, Barcelona.

**OPP.45:299**; BA.19c\*:206p





**Figure ou couple.** Paris. 1945. Gelatin silver print of engraved stone. S/U. Musée Picasso, Paris.

**OPP.45:305**; MPP:1996.230; PP.45:123; WS:300

---

**Femme debout.** Vallauris. 1945. Modelled & incised ceramic. 10,5 cm. Sotheby's. #30, L23005, 04/19/23. Formerly Marina Picasso Collection.

**OPP.45:361**





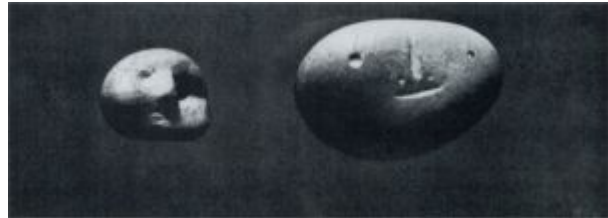
**Femme debout.** Paris. 1945. Plaster. S/U. Private collection.

**OPP.45:367**; PP.45:088

---

**Tête.** Paris. 1945. Engraved pebble. 1 cm;  
1,5 x 2,5 cm. Private collection.

**OPP.45:370**; PP.45:112; WS:286;  
WS:287





**Portrait d'homme (Marcel Moudin)**. Paris. 1945. Drypoint. 8 x 18 cm. Private collection.

**OPP.45:375**; B.II:1833

---

**Femme debout**. Paris. 1945. Bronze with brown patina. 3,5 x 8,6 x 3,3 cm. Christie's. #103, 8599, 11/06/01. Also Christie's. 312, 2165, 05/07/09; The Norton Simon Museum, Pasadena, CA. (Inv M.1968.01.5.S).

**OPP.45:012**; PP.45:103; WS:324.II; KB.01\*:134d; LA.63\*:n/a; NY.49a\*:n/a; NY.60c\*:n/a; ST.59\*:n/a





**Femme debout.** Paris. 1945. Bronze with golden brown patina. 26 cm. Museum Ludwig, Köln. (Inv ML 01561). Schenkung 1994. Also Sotheby's. #254, N07792, 05/09/02; Waddington Galleries. 2007.

**OPP.45:015**; PP.45:086; WS:303; DW.05:82p; LO.07e\*:5;  
RP.67b\*:84

---

**Femme debout.** Paris. 1945. Bronze with brown patina. [13,5] 13,3 cm. Sotheby's. #142, N10787, 11/17/21. Formerly The Art Institute of Chicago. (Inv 1967.684). Grant J. Pick Purchase Fund. Also Christie's. #343, 1076, 05/08/02.

**OPP.45:016**; PP.45:093; WS:309.II; AB.57\*:91p;  
CH.68a\*:n/a; NY.49a\*:n/a; NY.60c\*:n/a; TO.88\*:n/a





**Femme assise.** Paris. 1945. Bronze with dark brown patina. [12,5] 12,8 cm. Christie's. #304, 15979, 11/12/18. Also Sotheby's. #14, N07844, 11/16/02.

**OPP.45:021**; PP.45:104; WS:325.II; AM.53\*:n/a; IR.65\*:n/a; NY.49a\*:n/a; NY.60c\*:n/a; ST.59\*:n/a

---

**Femme debout.** Paris. 1945. Bronze with gold brown patina, edition 10 [Cast after *Femme debout*]. 26 cm. Christie's. #113, 9529, 12/05/02.

**OPP.45:023**; PP.45:098; WS:314.II; BM.61\*:n/a; JR.12\*:263p; LA.71b\*:305; NY.49a\*:n/a; NY.60c\*:n/a; ST.59\*:n/a







**Poule.** Paris. 1945. Colored crayons on cut-out paper. 8 x 11 cm. Private collection. Formerly Sotheby's. #250, L03003, 02/05/03.

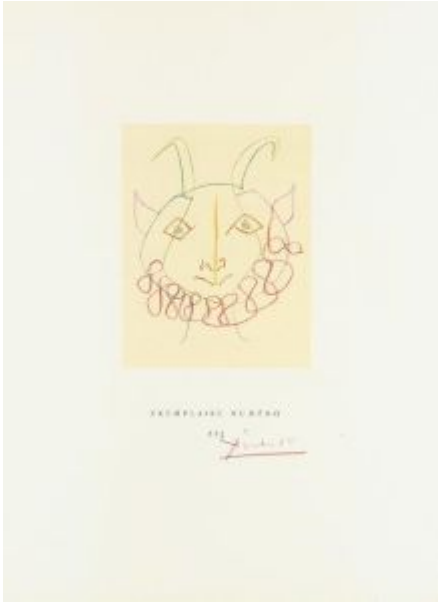
**OPP.45:032**

---

**Fille.** Paris. 1945. Colored crayons on cut-out paper. 20 x 9 cm. Private collection. Formerly Sotheby's. #251, L03003, 02/05/03.

**OPP.45:033**





**Faune (Jaume Sabartés, Dans L'atelier de Picasso)**. Paris. 1945. Lithograph. 47 x 35,5 cm. Sotheby's. #156, N07953, 12/10/03.

---

**OPP.45:055**

---

**Femme debout**. Paris. 1945. Bronze, brown patina, edition 10. 24,2 cm. Sotheby's. #136, N10787, 11/17/21. Formerly The Art Institute of Chicago. (Inv 1967.689). Grant J. Pick Purchase Fund. Also Sotheby's. #353, N07991, 05/06/04.

---

**OPP.45:061**; PP.45:106; WS:327.II; BS.55:192; JR.12\*:263p; LO.50a\*:n/a; NY.49a\*:n/a; NY.51c\*:n/a; NY.60c\*:n/a; RP.67c\*:85; ST.59\*:n/a





**Le homard.** Paris. 1945. Aquatint printed in colors on Montval hand-made laid paper, edition 100 [After *Le homard*]. 26,5 x 45,6 cm. Christie's. #311, 6920, 06/30/04.

**OPP.45:062**

---

**Femme debout.** Paris. 1945. Bronze with brown patina. [17,5] 17,8cm. Christie's. #472, 2596, 11/08/12. Also Christie's. #400, 7023, 02/08/05.

**OPP.45:064;** PP.45:105; WS:326.II; DW.05:82p; LA.63\*:n/a; LP.99:193p; NY.49a\*:n/a; NY.60c\*:n/a





**Le verre.** Paris. [1945]. Black crayon over collage. 15,9 x 11,5 cm. Private collection. Formerly Sotheby's. #382, 06/28/89; Christie's. #163, 6598, 05/12/88.

**OPP.45:087**; PP.45:069; BA.77a\*:29; BU.75b\*:n/a; GE.73b\*:56

---

**Femme debout.** Paris. 1945. Bronze, edition 10. 25,5 x 4 x 4 cm. Musée National d'Art Moderne, Centre Georges Pompidou, Paris. (Inv AM955S). Achat 1953. Musée de Grenoble (04/15/53). Also Christie's. #411, 1534, 06/25/14; Sotheby's.#217, N09036, 11/07/13.

**OPP.45:094**; PP.45:091; WS:307.II; AB.57\*:91p; DW.05:82p; JR.12\*:264p; LA.63\*:n/a; NY.49a\*:n/a; NY.60c\*:n/a; TE.21\*:97; TK.64\*:n/a





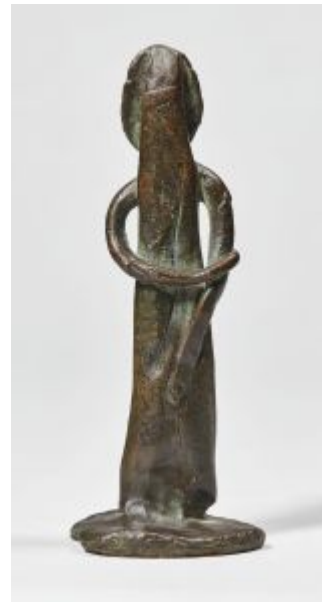
**Femme debout.** Paris. 1945. Bronze [Cast after *Femme debout*]. [21 x 4 x 3] 26 x 4,5 x 3,7 cm. Musée National d'Art Moderne, Centre Georges Pompidou, Paris. (Inv AM956S). Achat 1953. Also Musée des Beaux-Arts, Grenoble (Inv DG 1953-2-1); The Art Institute of Chicago. (Inv 1967.688). Grant J. Pick Purchase Fund; The Norton Simon Museum, Pasadena, CA. (Inv M.1968.01.2.S).

**OPP.45:095**; PP.45:092; WS:308.II; AB.57\*:91p; CH.68a\*:n/a; GB.19\*:163; LA.63\*:n/a; NY.49a\*:n/a; NY.60c\*:n/a; TE.21\*:96; TK.64\*:n/a

---

**Femme debout.** Paris. 1945. Bronze, brown & gold patina [Cast after *Femme debout*]. [20] 20,3 cm. Sotheby's. #113, N09140, 05/08/14. Formerly Sotheby's. #365, N08197, 05/04/06.

**OPP.45:098**; PP.45:101; WS:322.II; KB.01\*:134c; LA.63\*:n/a; NY.49a\*:n/a; NY.52\*:n/a; NY.60c\*:n/a; NY.69e\*:58; ST.59\*:n/a





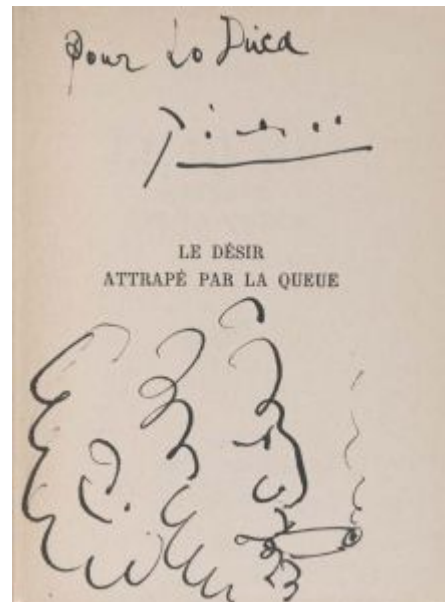
**Femme debout.** Paris. 1945. Bronze with brown patina. 12,5 x 7 x 1 cm. Musée des Beaux-Arts, Grenoble. (Inv DG 1953-2-4). On deposit from Musée National d'Art Moderne, Centre Georges Pompidou, Paris. (Inv AM957S). Achat 1953. Also Musée de Grenoble (04/15/53); Christie's. #379, 1657, 05/03/06.

**OPP.45:099**; PP.45:097; WS:313.II; GB.19\*:165;  
LA.63\*:n/a; NY.49a\*:n/a; NY.52\*:n/a; NY.60c\*:n/a; TE.21\*:94

---

**Tête d'homme (Pour Lo Duca).** Paris. 1945. Etching, edition 510. S/U. Christie's. #585, 2490, 06/15/06.

**OPP.45:101**





**Femme debout.** Paris. 1945 [1947]. Bronze, edition 10 [Cast after *Femme debout*]. [19] 18,5 cm. Museo Picasso, Málaga. Gift of Bernard Ruiz-Picasso. Also The Art Institute of Chicago. (Inv 1967.686). Grant J. Pick Purchase Fund; Sotheby's. #353, L06008, 06/20/06; The Norton Simon Museum, Pasadena, CA. (Inv M.1968.01.3.S).

**OPP.45:106**; MPM:2.141B; PP.45:094; WS:310.II; AB.57\*:91p; CH.68a\*:n/a; GS.03:1.101; LA.63\*:n/a; LW.15\*:47p; NC.17\*:105; NY.49a\*:n/a; NY.60c\*:n/a

---

**Trois galets gravés Tête.** Paris. 1945~1946.  
Gelatin silver print of engraved pebbles. 25,6 x 20,7 cm. Musée Picasso, Paris.

**OPP.45:304**; MPP:1996.228; PP.45:120; WS:292; WS:293; WS:294; PA.21f\*:55





**Femme assise.** Paris. 1945~1946 [1947]. Bronze (brown patina), edition 2. 16,5 x 13 x 6,5 cm. Sotheby's. #134, N10787, 11/17/21. Formerly The Art Institute of Chicago. (Inv 1967.682). Grant J. Pick Purchase Fund. Also Sotheby's. #227, N08988, 05/08/13.

**OPP.45:160**; PP.45:109; WS:331.II; CH.68a\*:n/a; JR.10\*:85p; JR.12\*:262p; LO.50a\*:n/a; MI.01\*:111; NY.49a\*:n/a; NY.60c\*:n/a

**Tête de animal.** Golfe-Juan. 1945~1846. Engraved pebble. 3,2 x 6 x 0.8 cm. Private collection.

**OPP.45:248**; PP.45:114; WS:289; TU.15\*:91







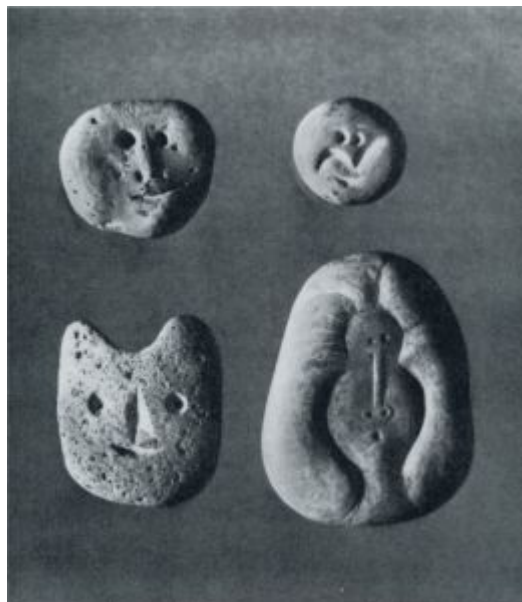
**Tête.** Paris. 1945~1946. Gelatin silver print of engraved pebbles. 22,8 x 17,4 cm. Musée Picasso, Paris.

**OPP.45:306**; MPP:1996.232; PP.45:125; WS:302;  
PA.21f\*:54

---

**Tête.** Paris. 1945~1946. Engraved pebble. 2 cm;  
1 cm. Private collection.

**OPP.45:363**; PP.45:121; WS:295; WS:296;  
WS:297





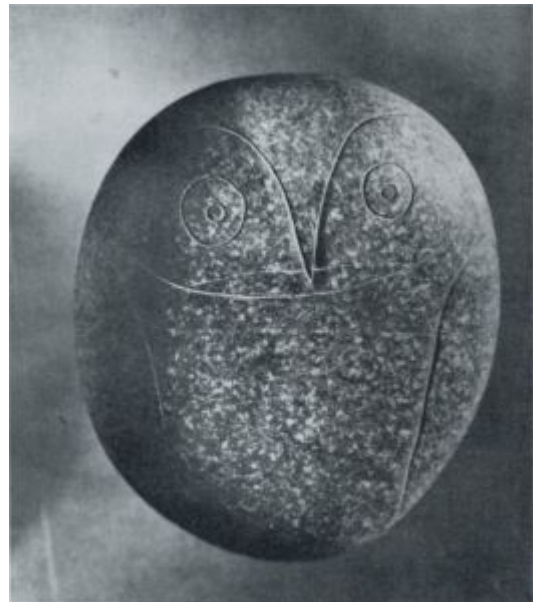
**Tête de faune; Tête; Tête de faune.** Paris. 1945~1946. Engraved tile & engraved pebble. 4,5 x 2,5 cm; 3 x 2 cm;. Private collection.

**OPP.45:368**; PP.45:110a/b; WS:281; WS:282

---

**Tête de chouette.** Paris. 1945~1946. Engraved pebble. S/U. Private collection.

**OPP.45:369**; PP.45:124; WS:301





**Personnage féminin.** Paris. 1945~1946. ENgraved pebble. S/U. Private collection.

**OPP.45:371**; PP.45:122; WS:299

---

**Tête de taureau.** Paris. 1945~1946. Engraved pebble. S/U. Private collection.

**OPP.45:372**; PP.45:115; WS:290





**Tête.** Paris. 1945~1946. Engraved pebble. 3 x 2,4 x 1 cm.  
Private collection.

**OPP.45:373**; PP.45:118; WS:291B

---

**Tête.** Paris. 1945~1946. Engraved pebble. 4,5 x 2,6 x 2  
cm. Private collection.

**OPP.45:374**; PP.45:119; WS:291C





**Femme debout.** Vallauris. 1945 [~1946~947]. Terracotta. 20,5 x 8,5 x 7,5 cm. Fundación Almine & Bernard Ruiz-Picasso para el Arte.

**OPP.45:163**; WS:323.I; LE.21\*:297; MI.01\*:135